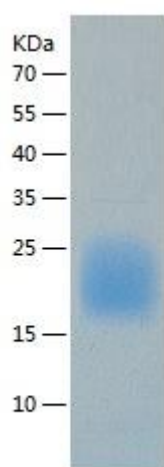


## Recombinant Human GM-CSF

<b>Catalogue No.:</b>	P8665
<b>Species:</b>	Human
<b>Uniprot ID:</b>	P04141
<b>Expression Region:</b>	18-144
<b>Host:</b>	HEK293 cells
<b>Tags:</b>	C-terminal His Tag
<b>Molecular Weight:</b>	24-27 kDa under reducing conditions
<b>Purity:</b>	Greater than 90% as determined by SDS-PAGE.
<b>Endotoxin:</b>	< 1 EU/μg as determined by LAL test.
<b>Activity:</b>	Measured in a cell proliferation assay using TF-1 human erythroleukemic cells. The ED50 for this effect is typically 100-500 pg/mL.
<b>Formulation:</b>	Lyophilized from a 0.2 μm filtered solution in 10 mM Hepes, 150 mM NaCl with 5% trehalose, pH7.4.
<b>Reconstitution:</b>	Centrifuge the vial before opening, reconstitute in sterile distilled water to a concentration of 0.1-1 mg/ml by gently pipetting 2-3 times, don't vortex.
<b>Synonyms:</b>	Colony stimulating factor, CSF, CSF2, GM CSF, GMCSF, GM-CSF, Molgramostin, Sargramostim

**Storage:**

The lyophilized protein is stable at -20 °C for up to 1 year. After reconstitution, the protein solution is stable at -20 to -80 °C for 3 months or 1 week at 2 to 8 °C under sterile conditions. For extended storage, it is recommended to further dilute in working aliquots, avoid repeated freeze/thaw cycle.

**SDS-PAGE:****Safety Note:**

This product is intended for research and manufacturing uses only. It is not a diagnostic device. Product degradation will result from multiple freeze/thaw cycles. It is suggested that the antigen be stored in use size aliquots and thawed just prior to use. This material has been inactivated, however as with all biological materials, it should be handled as potentially infectious. The user assumes all responsibility for care, custody and control of the material, including its disposal, in accordance with all regulations.