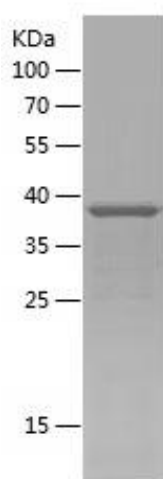


## Recombinant Human TFE3

<b>Catalogue No.:</b>	P1195
<b>Species:</b>	Human
<b>Uniprot ID:</b>	P19532
<b>Expression Region:</b>	354-501
<b>Host:</b>	E.Coli
<b>Tags:</b>	N-terminal His-IF2DI Tag
<b>Molecular Weight:</b>	37 kDa under reducing conditions
<b>Purity:</b>	Greater than 90% as determined by SDS-PAGE.
<b>Formulation:</b>	Lyophilized from a 0.2 µm filtered solution in 10 mM Hepes, 150 mM NaCl with 5% trehalose, pH7.4.
<b>Reconstitution:</b>	Centrifuge the vial before opening, reconstitute in sterile distilled water to a concentration of 0.1-1 mg/ml by gently pipetting 2-3 times, don't vortex.
<b>Storage:</b>	The lyophilized protein is stable at -20 °C for up to 1 year. After reconstitution, the protein solution is stable at -20 to -80 °C for 3 months or 1 week at 2 to 8 °C under sterile conditions. For extended storage, it is recommended to further dilute in working aliquots, avoid repeated freeze/thaw cycle.

**Synonyms:** bHLH e33, bHLHe33, Class E basic helix-loop-helix protein 33, RCCP 2, RCCP2, RCCX1, Renal cell carcinoma, papillary, Tcfe 3, Tcfe3, TFE 3, Tfe3, TFE3\_HUMAN, TFEA, Transcription factor binding to IGHM enhancer 3, Transcription factor E family, member A

**SDS-PAGE:**



**Safety Note:** This product is intended for research and manufacturing uses only. It is not a diagnostic device. Product degradation will result from multiple freeze/thaw cycles. It is suggested that the antigen be stored in use size aliquots and thawed just prior to use. This material has been inactivated, however as with all biological materials, it should be handled as potentially infectious. The user assumes all responsibility for care, custody and control of the material, including its disposal, in accordance with all regulations.