

PE Anti-Mouse Ly6A (D7)

Product Information

Catalog No.:	PE-30139
Conjugation:	PE
Size:	50T/100T
Form:	liquid
Host:	Rat
Clonality:	monoclonal
Clone ID:	D7
IsoType:	IgG2a, kappa
Storage:	PBS with 0.1% sodium azide, 1%BSA, pH 7.3, 2-8°C for 12 months (Avoid repeated freeze / thaw cycles.)

Immunogen information

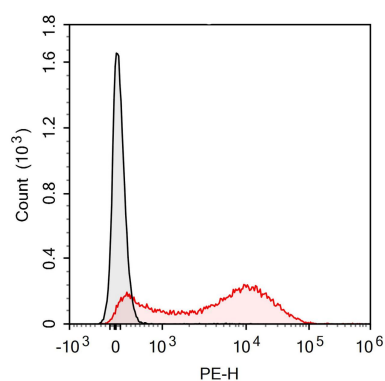
Synonyms:	Ly-6A.2 Ly-6E.1 Ly6 Ly6a SCA-1 TAP
Uniprot ID :	P05533

Application

Reactivity:	Mouse
Tested Application:	FC

Recommended dilution: Volume per test: 5µL. Each lot of this antibody is quality control tested by flow cytometric analysis. The amount of the reagent is suggested to be used 5 µL of antibody per test (million cells in 100 µL staining volume or per 100 µL of whole blood). Please check your vial before the experiment. Since applications vary, the appropriate dilutions must be determined for individual use.

Image:



KM murine bone marrow cells are stained with PE Anti-Mouse Ly6A/E(Sca-1) Antibody (red histogram) or PE Rat IgG2a, κ Isotype Control (black histogram).