

PE Anti-Human CD33 Antibody(6C5)

Product Information

Catalog No.:	PE-30118
Conjugation:	PE
Size:	20T/100T
Form:	liquid
Host:	Mouse
Clonality:	monoclonal
Clone ID:	6C5
IsoType:	IgG1, kappa
Storage:	PBS with 0.1% sodium azide, 1%BSA, pH 7.3, 2-8°C for 12 months (Avoid repeated freeze / thaw cycles.)

Immunogen information

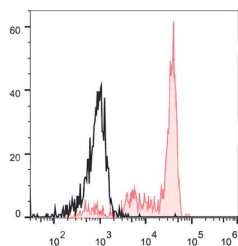
Synonyms:	CD33 Myeloid cell surface antigen CD33 SIGLEC3 Sialic acid-binding Ig-like lectin 3 Siglec-3 gp67
Uniprot ID :	P20138

Application

Reactivity:	Human
Tested Application:	FC

Recommended dilution: Volume per test: 5µL. Each lot of this antibody is quality control tested by flow cytometric analysis. The amount of the reagent is suggested to be used 5 µL of antibody per test (million cells in 100 µL staining volume or per 100 µL of whole blood). Please check your vial before the experiment. Since applications vary, the appropriate dilutions must be determined for individual use.

Image:



Staining of normal human peripheral blood cells with PE Anti-Human CD33 Antibody(6C5) (filled red histogram) or PE Mouse IgG1, κ Isotype Control (empty black histogram). Cells in the lymphocytes gate were used for analysis.