

PE Anti-Mouse CD16/32 Antibody(2.4G2)

Product Information

Catalog No.:	PE-30106
Conjugation:	PE
Size:	50T/100T
Form:	liquid
Host:	Rat
Clonality:	monoclonal
Clone ID:	2.4G2
IsoType:	IgG2b, kappa
Storage:	PBS with 0.1% sodium azide, 1%BSA, pH 7.3, 2-8°C for 12 months (Avoid repeated freeze / thaw cycles.)

Immunogen information

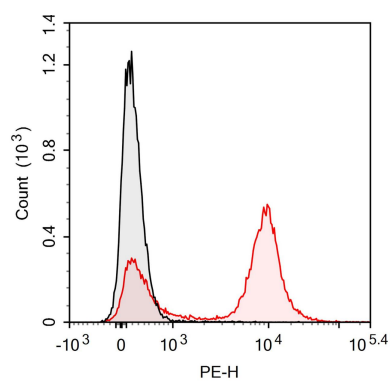
Synonyms:	CD16a/b CD32 CD32A/B FCG2A FCGR2A/BFCGR3 FCGR3A/B Fc fragment of IgG low affinity IIIa/b receptor Fc fragment of IgG low affinity IIIb receptor Fc fragment of IgG low affinity IIa/b receptor Fc gamma RIIa/b Fc gamma receptor III A/B FcGR CD16/32
Uniprot ID :	P08508 P08101

Application

Reactivity:	Mouse
Tested Application:	FC

Recommended dilution: Volume per test: 5µL. Each lot of this antibody is quality control tested by flow cytometric analysis. The amount of the reagent is suggested to be used 5 µL of antibody per test (million cells in 100 µL staining volume or per 100 µL of whole blood). Please check your vial before the experiment. Since applications vary, the appropriate dilutions must be determined for individual use.

Image:



KM mouse splenocytes are stained with PE Anti-Mouse CD16/32 Antibody (red histogram) or PE Rat IgG2b, κ Isotype Control (black histogram).