

PE Anti-Mouse/Human CD11b(M1/70)

Product Information

Catalog No.:	PE-30072
Conjugation:	PE
Size:	50T/100T
Form:	liquid
Host:	Rat
Clonality:	monoclonal
Clone ID:	M1/70
IsoType:	IgG2b, kappa
Storage:	PBS with 0.1% sodium azide, 1%BSA, pH 7.3, 2-8°C for 12 months (Avoid repeated freeze / thaw cycles.)

Immunogen information

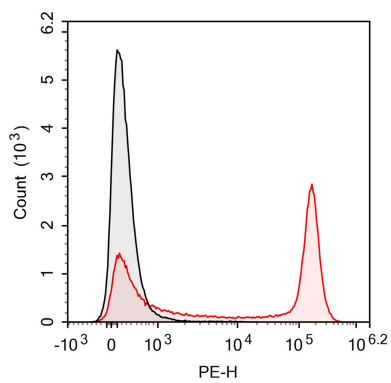
Synonyms:	Integrin alpha-M Itgam CD11 antigen-like family member B CR-3 alpha chain Leukocyte adhesion receptor MO1 CD11b
Uniprot ID :	P05555/P11215

Application

Reactivity:	Mouse, Human
Tested Application:	FC

Recommended dilution: Volume per test: 5µL. Each lot of this antibody is quality control tested by flow cytometric analysis. The amount of the reagent is suggested to be used 5 µL of antibody per test (million cells in 100 µL staining volume or per 100 µL of whole blood). Please check your vial before the experiment. Since applications vary, the appropriate dilutions must be determined for individual use.

Image:



KM mouse bone marrow cells are stained with PE Anti-Mouse/Human CD11b Antibody (red histogram) or PE Rat IgG2b, κ Isotype Control (black histogram).