

PE Anti-Human CD11C(BU15)

Product Information

Catalog No.:	PE-30050
Conjugation:	PE
Size:	50T/100T
Form:	liquid
Host:	Mouse
Clonality:	monoclonal
Clone ID:	BU15
IsoType:	IgG1, kappa
Storage:	PBS with 0.1% sodium azide, 1%BSA, pH 7.3, 2-8°C for 12 months (Avoid repeated freeze / thaw cycles.)

Immunogen information

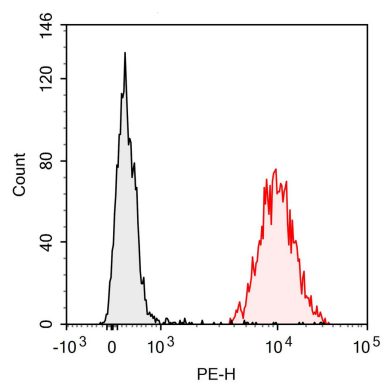
Synonyms:	Integrin alpha-X Itgax CD11 antigen-like family member C Leukocyte adhesion receptor p150+95 CD11c
Uniprot ID :	P20702

Application

Reactivity:	Human
Tested Application:	FC

Recommended dilution: Volume per test: 5µL. Each lot of this antibody is quality control tested by flow cytometric analysis. The amount of the reagent is suggested to be used 5 µL of antibody per test (million cells in 100 µL staining volume or per 100 µL of whole blood). Please check your vial before the experiment. Since applications vary, the appropriate dilutions must be determined for individual use.

Image:



Staining of normal human peripheral blood cells with PE Anti-Human CD11c Antibody(BU15) (red histogram) or PE Mouse IgG1, κ Isotype Control (black histogram). Cells in the monocyte gate were used for analysis.