

PE Anti-Human CD11B(ICRF44)

Product Information

Catalog No.:	PE-30049
Conjugation:	PE
Size:	50T/100T
Form:	liquid
Host:	Mouse
Clonality:	monoclonal
Clone ID:	ICRF44
IsoType:	IgG1, kappa
Storage:	PBS with 0.1% sodium azide, 1%BSA, pH 7.3, 2-8°C for 12 months (Avoid repeated freeze / thaw cycles.)

Immunogen information

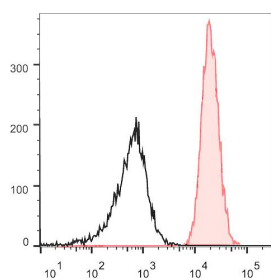
Synonyms:	Integrin alpha-M Itgam CD11 antigen-like family member B CR-3 alpha chain Leukocyte adhesion receptor MO1 CD11b
Uniprot ID :	P11215

Application

Reactivity:	Human
Tested Application:	FC

Recommended dilution: Volume per test: 5µL. Each lot of this antibody is quality control tested by flow cytometric analysis. The amount of the reagent is suggested to be used 5 µL of antibody per test (million cells in 100 µL staining volume or per 100 µL of whole blood). Please check your vial before the experiment. Since applications vary, the appropriate dilutions must be determined for individual use.

Image:



Human peripheral blood granulocytes are stained with PE Anti-Human CD11b Antibody (filled red histogram). Unstained granulocytes (empty black histogram) are used as control.