

PE Anti-Human CD11A(TS1/22.1.1.13)

Product Information

| | |
|--------------|--|
| Catalog No.: | PE-30048 |
| Conjugation: | PE |
| Size: | 50T/100T |
| Form: | liquid |
| Host: | Mouse |
| Clonality: | monoclonal |
| Clone ID: | TS1/22.1.1.13 |
| IsoType: | IgG1, kappa |
| Storage: | PBS with 0.1% sodium azide, 1%BSA, pH 7.3, 2-8°C for 12 months (Avoid repeated freeze / thaw cycles.) |

Immunogen information

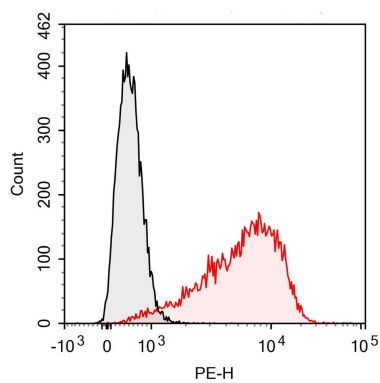
| | |
|--------------|---|
| Synonyms: | Integrin alpha-L Itgal CD11 antigen-like family member A LFA-1A Lymphocyte antigen 15 Ly-15 CD11a |
| Uniprot ID : | P20701 |

Application

| | |
|---------------------|-------|
| Reactivity: | Human |
| Tested Application: | FC |

Recommended dilution: Volume per test: 5µL. Each lot of this antibody is quality control tested by flow cytometric analysis. The amount of the reagent is suggested to be used 5 µL of antibody per test (million cells in 100 µL staining volume or per 100 µL of whole blood). Please check your vial before the experiment. Since applications vary, the appropriate dilutions must be determined for individual use.

Image:



Human peripheral blood lymphocytes are stained with PE Anti-Human CD11a Antibody (red histogram). Unstained lymphocytes (black histogram) are used as control.