

PE Anti-Human CD22(HIB22)

Product Information

Catalog No.:	PE-30034
Conjugation:	PE
Size:	50T/100T
Form:	liquid
Host:	Mouse
Clonality:	monoclonal
Clone ID:	HIB22
IsoType:	IgG1, kappa
Storage:	PBS with 0.1% sodium azide, 1%BSA, pH 7.3, 2-8°C for 12 months (Avoid repeated freeze / thaw cycles.)

Immunogen information

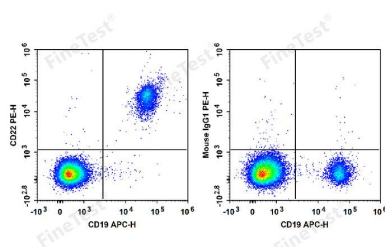
Synonyms:	B-cell receptor CD22 Cd22 B-lymphocyte cell adhesion molecule BL-CAM Sialic acid-binding Ig-like lectin 2 Siglec-2 T-cell surface antigen Leu-14 CD22 Lyb-8 Siglec2
Uniprot ID :	P20273

Application

Reactivity:	Human
Tested Application:	FC

Recommended dilution: Volume per test: 5µL. Each lot of this antibody is quality control tested by flow cytometric analysis. The amount of the reagent is suggested to be used 5 µL of antibody per test (million cells in 100 µL staining volume or per 100 µL of whole blood). Please check your vial before the experiment. Since applications vary, the appropriate dilutions must be determined for individual use.

Image:



Human peripheral blood lymphocytes are stained with APC Anti-Human CD19 Antibody and PE Anti-Human CD22 Antibody (Left). Lymphocytes are stained with APC Anti-Human CD19 Antibody and PE Mouse IgG1, κ Isotype Control (Right).