

## PE Anti-Human CD10(HI10a)

### Product Information

Catalog No.:	PE-30032
Conjugation:	PE
Size:	50T/100T
Form:	liquid
Host:	Mouse
Clonality:	monoclonal
Clone ID:	HI10a
IsoType:	IgG1, kappa
Storage:	PBS with 0.1% sodium azide, 1%BSA, pH 7.3, 2-8°C for 12 months (Avoid repeated freeze / thaw cycles.)

### Immunogen information

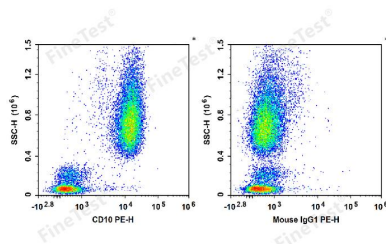
Synonyms:	Neprilysin Atriopeptidase CALLA Enkephalinase NEP Neutral endopeptidase Skin fibroblast elastase SFE CD10
Uniprot ID :	P08473

### Application

Reactivity:	Human
Tested Application:	FC

Recommended dilution: Volume per test: 5µL. Each lot of this antibody is quality control tested by flow cytometric analysis. The amount of the reagent is suggested to be used 5 µL of antibody per test (million cells in 100 µL staining volume or per 100 µL of whole blood). Please check your vial before the experiment. Since applications vary, the appropriate dilutions must be determined for individual use.

Image:



Human peripheral blood leucocytes are stained with PE Anti-Human CD10 Antibody (Left). Leucocytes are stained with PE Mouse IgG1,  $\kappa$  Isotype Control (Right).