

PE-Cy5.5 Anti-Mouse CD22(Cy34.1)

Product Information

Catalog No.:	PC55-30016
Conjugation:	PE-Cy5.5
Size:	50T/100T
Form:	liquid
Host:	Mouse
Clonality:	monoclonal
Clone ID:	Cy34.1
IsoType:	IgG1, kappa
Storage:	PBS with 0.1% sodium azide, 1%BSA, pH 7.3, 2-8°C for 12 months (Avoid repeated freeze / thaw cycles.)

Immunogen information

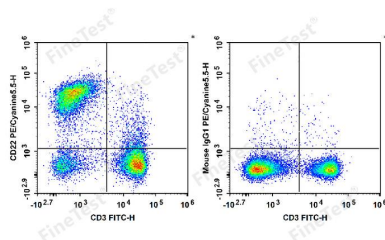
Synonyms:	B-cell receptor CD22 Cd22 B-lymphocyte cell adhesion molecule BL-CAM Sialic acid-binding Ig-like lectin 2 Siglec-2 T-cell surface antigen Leu-14 CD22 Lyb-8 Siglec2
Uniprot ID :	P35329

Application

Reactivity:	Mouse
Tested Application:	FC

Recommended dilution: Volume per test: 5µL. Each lot of this antibody is quality control tested by flow cytometric analysis. The amount of the reagent is suggested to be used 5 µL of antibody per test (million cells in 100 µL staining volume or per 100 µL of whole blood). Please check your vial before the experiment. Since applications vary, the appropriate dilutions must be determined for individual use.

Image:



C57BL/6 murine splenocytes are stained with FITC Anti-Mouse CD3 Antibody and PE/Cy5.5 Anti-Mouse CD22 Antibody (Left). Splenocytes are stained with FITC Anti-Mouse CD3 Antibody and PE/Cyanine5.5 Mouse IgG1, κ Isotype Control (Right).