

## ZBED1 antibody

### Product Information

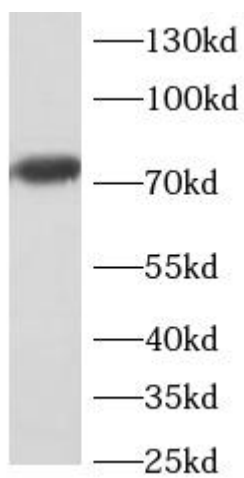
|               |   |
|---------------|---|
| Catalog No.:  | FNab11044   |
| Size:         | 100µg   |
| Form:         | liquid  |
| Purification: | Immunogen affinity purified   |
| Purity:       | ≥95% as determined by SDS-PAGE  |
| Host:         | Rabbit  |
| Clonality:    | polyclonal  |
| Clone ID:     | None  |
| IsoType:      | IgG   |
| Storage:      | PBS with 0.02% sodium azide and 50% glycerol pH 7.3, -20°C for 12 months (Avoid repeated freeze / thaw cycles.) |

### Immunogen information

|              |   |
|--------------|---|
| Immunogen:   | zinc finger, BED-type containing 1                |
| Synonyms:    | ALTE DREF dREF homolog hDREF KIAA0785 TRAMP ZBED1 |
| Observed MW: | 78 kDa  |
| Uniprot ID : | O96006  |

### Application

|                           |              |
|---------------------------|--------------|
| Reactivity:               | Human, Mouse |
| Tested Application:       | ELISA, WB    |
| Recommended dilution: WB: | 1:500-1:2000 |
| Image:                    |              |



Jurkat cells were subjected to SDS PAGE followed by western blot with FNab11044 at dilution of 1:1000