

Phospho-Smad2 (S465/S467) antibody

Product Information

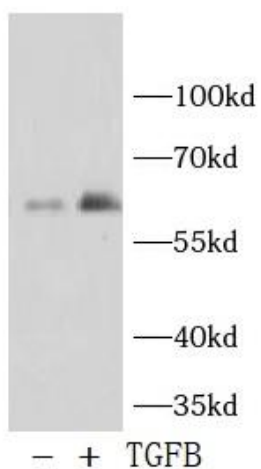
Catalog No.:	FNab10898
Size:	100µg
Form:	liquid
Purification:	Immunogen affinity purified
Purity:	≥95% as determined by SDS-PAGE
Host:	Rabbit
Clonality:	polyclonal
Clone ID:	None
IsoType:	IgG
Storage:	PBS with 0.02% sodium azide and 50% glycerol pH 7.3, -20°C for 12 months(Avoid repeated freeze / thaw cycles.)

Immunogen information

Immunogen:	A phospho specific peptide corresponding to residues surrounding S465/S467 of human Smad2
Synonyms:	Mothers against decapentaplegic homolog 2 (MAD homolog 2, Mothers against DPP homolog 2) JV18-1 Mad-related protein 2 (hMAD-2) SMAD family member 2 (SMAD 2, Smad2, hSMAD2) SMAD2 MADH2 MADR2
Observed MW:	60 kDa
Uniprot ID :	Q15796

Application

Reactivity:	Human, Mouse
Tested Application:	WB
Recommended dilution:WB:	1:500-1:2000
Image:	



Hela lysates were subjected to SDS PAGE followed by western blot with Phospho-Smad2-S465/S467 antibody at 1:1000 .HeLa cells were treated by TGF- β (10ng/mL) for 30 minutes after serum-starvation overnight.