

WFDC12 antibody

Product Information

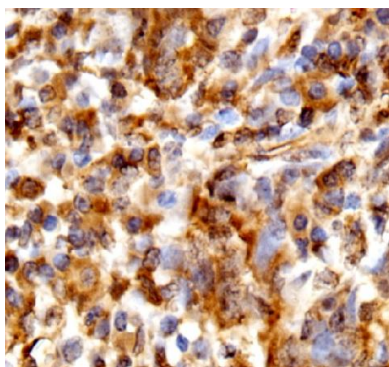
Catalog No.:	FNab10885
Size:	100µg
Form:	liquid
Purification:	Immunogen affinity purified
Purity:	≥95% as determined by SDS-PAGE
Host:	Rabbit
Clonality:	polyclonal
Clone ID:	None
IsoType:	IgG
Storage:	PBS with 0.02% sodium azide and 50% glycerol pH 7.3, -20°C for 12 months(Avoid repeated freeze / thaw cycles.)

Immunogen information

Immunogen:	WAP four-disulfide core domain protein 12
Synonyms:	WAP four-disulfide core domain protein 12 Putative protease inhibitor WAP12 Whey acidic protein 2 WFDC12 C20orf122 WAP2
Observed MW:	None
Uniprot ID :	Q8WWY7

Application

Reactivity:	Human
Tested Application:	ELISA, IHC
Recommended dilution:	IHC: 1:50 - 1:500
Image:	



Immunohistochemistry of paraffin-embedded human lung cancer tissue using FNab10885(WFDC12 antibody) at dilution of 1:100