

## CLCA1 antibody

### Product Information

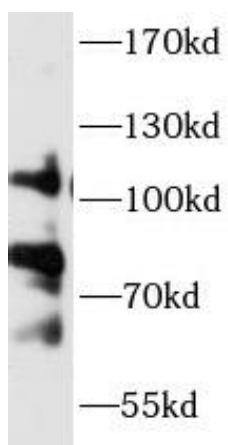
Catalog No.:	FNab10859
Size:	100µg
Form:	liquid
Purification:	Immunogen affinity purified
Purity:	≥95% as determined by SDS-PAGE
Host:	Rabbit
Clonality:	polyclonal
Clone ID:	None
IsoType:	IgG
Storage:	PBS with 0.02% sodium azide and 50% glycerol pH 7.3, -20°C for 12 months(Avoid repeated freeze / thaw cycles.)

### Immunogen information

Immunogen:	Calcium-activated chloride channel regulator 1
Synonyms:	Calcium-activated chloride channel regulator 1 Calcium-activated chloride channel family member 1 (hCLCA1) Calcium-activated chloride channel protein 1 (CaCC-1, hCaCC-1) CLCA1 CACCC1
Observed MW:	80-120 kDa
Uniprot ID :	A8K7I4

### Application

Reactivity:	Human, Mouse, Rat
Tested Application:	ELISA, WB
Recommended dilution:WB:	1:500 - 1:2000
Image:	



mouse uterus were subjected to SDS PAGE followed by western blot with FNab10859(CLCA1 antibody) at dilution of 1:1000