

RPL36 antibody

Product Information

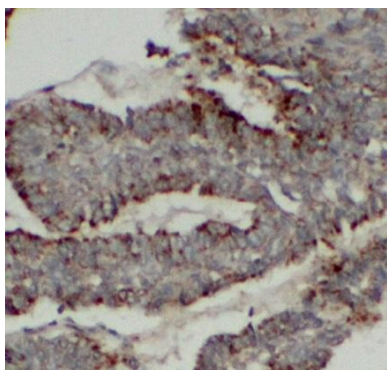
Catalog No.:	FNab10845
Size:	100µg
Form:	liquid
Purification:	Immunogen affinity purified
Purity:	≥95% as determined by SDS-PAGE
Host:	Rabbit
Clonality:	polyclonal
Clone ID:	None
IsoType:	IgG
Storage:	PBS with 0.02% sodium azide and 50% glycerol pH 7.3, -20°C for 12 months(Avoid repeated freeze / thaw cycles.)

Immunogen information

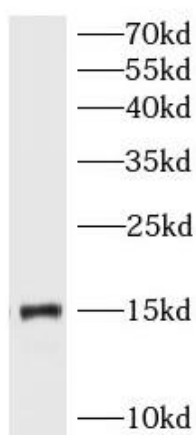
Immunogen:	ribosomal protein L36
Synonyms:	Large ribosomal subunit protein eL36 60S ribosomal protein L36 RPL36
Observed MW:	15 kDa
Uniprot ID :	Q9Y3U8

Application

Reactivity:	Human, Mouse, Rat
Tested Application:	ELISA, WB, IHC
Recommended dilution:	WB: 1:500 - 1:2000; IHC: 1:50 - 1:200
Image:	



Immunohistochemistry of paraffin-embedded human liver cancer tissue slide using FNab10845(RPL36 Antibody) at dilution of 1:100



HeLa cells were subjected to SDS PAGE followed by western blot with FNab10845(RPL36 antibody) at dilution of 1:1000