

CIP2A antibody

Product Information

Catalog No.:	FNab10841
Size:	100µg
Form:	liquid
Purification:	protein A+G purified
Purity:	≥95% as determined by SDS-PAGE
Host:	Mouse
Clonality:	monoclonal
Clone ID:	9H8
IsoType:	IgG1
Storage:	PBS with 0.02% sodium azide and 50% glycerol pH 7.3, -20°C for 12 months(Avoid repeated freeze / thaw cycles.)

Background

Cancerous inhibitor of protein phosphatase 2A (CIP2A) was originally identified as a cellular protein phosphatase 2A (PP2A) inhibitor, and has been shown to control oncogenic cellular signals by suppressing the tumor suppressor PP2A. CIP2A overexpression has been found in several human malignancies including breast cancer, hepatocellular carcinoma, gastric cancer, head and neck cancer, colon cancer, prostate cancer and non-small cell lung cancer. CIP2A is a 83~102 kDa cytoplasmic protein.

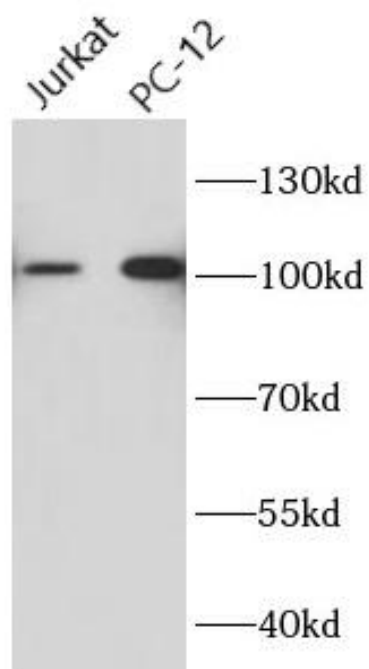
Immunogen information

Immunogen:	KIAA1524
Synonyms:	Protein CIP2A Cancerous inhibitor of PP2A p90 autoantigen CIP2A KIAA1524
Observed MW:	102 kDa
Uniprot ID :	Q8TCG1

Application

Reactivity:	Human, Rat
Tested Application:	ELISA, WB
Recommended dilution:WB:	1:1000 - 1:10000

Image:



Various lysates were subjected to SDS PAGE followed by western blot with FNab10841(CIP2A antibody) at dilution of 1:5000