

ANXA1 antibody

Product Information

Catalog No.:	FNab10836
Size:	100µg
Form:	liquid
Purification:	protein A+G purified
Purity:	≥95% as determined by SDS-PAGE
Host:	Mouse
Clonality:	monoclonal
Clone ID:	1F7
IsoType:	IgG1
Storage:	PBS with 0.02% sodium azide and 50% glycerol pH 7.3, -20°C for 12 months(Avoid repeated freeze / thaw cycles.)

Background

ANXA1, also named as ANX1, LPC1 and p35, belongs to the annexin family. It is a member of the annexin family of Ca²⁺-binding and phospholipidbinding proteins, and it is particularly abundant in various populations of peripheral blood leukocytes. ANXA1 regulates phospholipase A2 activity. It seems to bind from two to four calcium ions with high affinity. ANXA1 is a pleiotrophic protein produced by many cell types including peripheral blood leucocytes. The antibody is specific to ANXA1.

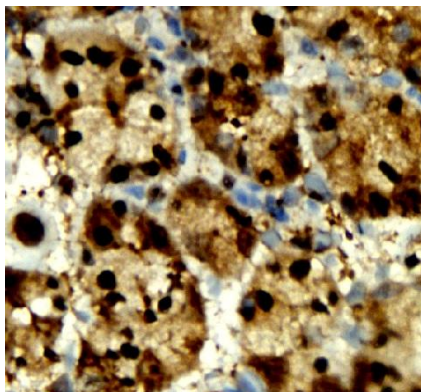
Immunogen information

Immunogen:	annexin A1
Synonyms:	Annexin A1 Annexin I Annexin-1 Calpactin II Calpactin-2 Chromobindin-9 Lipocortin I Phospholipase A2 inhibitory protein p35 Annexin Ac2-26 ANXA1 ANX1 LPC1
Observed MW:	38 kDa
Uniprot ID :	P04083

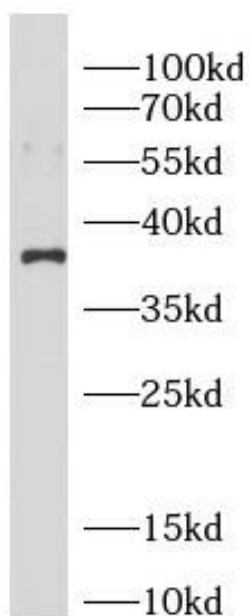
Application

Reactivity:	Human, Mouse, Rat
Tested Application:	ELISA, WB, IHC, IF
Recommended dilution:	WB: 1:500-1:2000; IHC: 1:50-1:200; IF: 1:20-1:200

Image:



Immunohistochemistry of paraffin-embedded human stomach tissue slide using FNab10836(ANXA1 Antibody) at dilution of 1:50



HeLa cells were subjected to SDS PAGE followed by western blot with FNab10836(ANXA1 antibody) at dilution of 1:1000