

SMAD2 antibody

Product Information

Catalog No.:	FNab10797
Size:	100µg
Form:	liquid
Purification:	Immunogen affinity purified
Purity:	≥95% as determined by SDS-PAGE
Host:	Rabbit
Clonality:	polyclonal
Clone ID:	None
IsoType:	IgG
Storage:	PBS with 0.02% sodium azide and 50% glycerol pH 7.3, -20°C for 12 months (Avoid repeated freeze / thaw cycles.)

Background

The protein encoded by this gene belongs to the SMAD, a family of proteins similar to the gene products of the *Drosophila* gene *mothers against decapentaplegic* (Mad) and the *C. elegans* gene *Sma*. SMAD proteins are signal transducers and transcriptional modulators that mediate multiple signaling pathways. This protein mediates the signal of the transforming growth factor (TGF)-beta, and thus regulates multiple cellular processes, such as cell proliferation, apoptosis, and differentiation. This protein is recruited to the TGF-beta receptors through its interaction with the SMAD anchor for receptor activation (SARA) protein. In response to TGF-beta signal, this protein is phosphorylated by the TGF-beta receptors. The phosphorylation induces the dissociation of this protein with SARA and the association with the family member SMAD4. The association with SMAD4 is important for the translocation of this protein into the nucleus, where it binds to target promoters and forms a transcription repressor complex with other cofactors. This protein can also be phosphorylated by activin type 1 receptor kinase, and mediates the signal from the activin. Alternatively spliced transcript variants have been observed for this gene.

Immunogen information

Immunogen:	SMAD family member 2
Synonyms:	Mothers against decapentaplegic homolog 2 (MAD homolog 2, Mothers against DPP homolog 2) JV18-1 Mad-related protein 2 (hMAD-2) SMAD family member 2 (SMAD 2, Smad2, hSMAD2) SMAD2 MADH2 MADR2

Observed MW: 52 kDa
Uniprot ID : Q15796

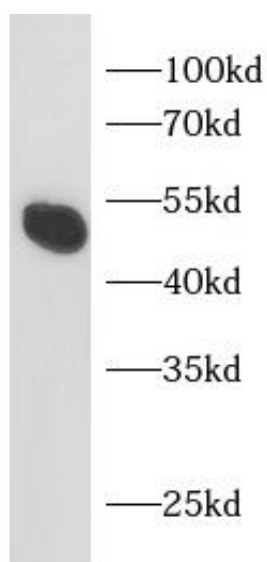
Application

Reactivity: Human

Tested Application: ELISA, WB

Recommended dilution: WB: 1:500 - 1:2000

Image:



Jurkat cells were subjected to SDS PAGE followed by western blot with FNab10797(SMAD2 antibody) at dilution of 1:1000