

## SDC1 antibody

### Product Information

|               |   |
|---------------|---|
| Catalog No.:  | FNab10760   |
| Size:         | 100µg   |
| Form:         | liquid  |
| Purification: | Immunogen affinity purified   |
| Purity:       | ≥95% as determined by SDS-PAGE  |
| Host:         | Rabbit  |
| Clonality:    | polyclonal  |
| Clone ID:     | None  |
| IsoType:      | IgG   |
| Storage:      | PBS with 0.02% sodium azide and 50% glycerol pH 7.3, -20°C for 12 months (Avoid repeated freeze / thaw cycles.) |

### Background

The protein encoded by this gene is a transmembrane (type I) heparan sulfate proteoglycan and is a member of the syndecan proteoglycan family. The syndecans mediate cell binding, cell signaling, and cytoskeletal organization and syndecan receptors are required for internalization of the HIV-1 tat protein. The syndecan-1 protein functions as an integral membrane protein and participates in cell proliferation, cell migration and cell-matrix interactions via its receptor for extracellular matrix proteins. Altered syndecan-1 expression has been detected in several different tumor types. While several transcript variants may exist for this gene, the full-length nature of only two have been described to date. These two represent the major variants of this gene and encode the same protein.

### Immunogen information

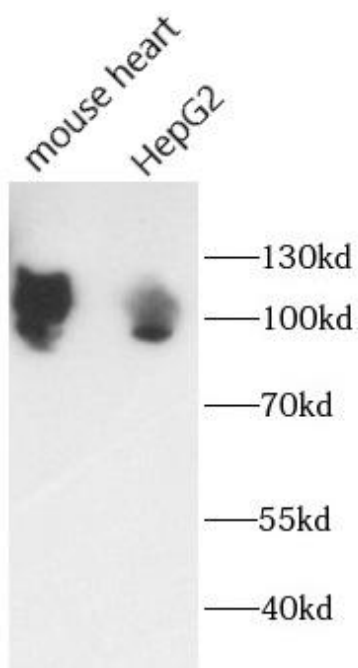
|              |                             |
|--------------|-----------------------------|
| Immunogen:   | syndecan 1                  |
| Synonyms:    | Syndecan-1 (SYND1) SDC1 SDC |
| Observed MW: | 85-120 kDa                  |
| Uniprot ID : | P18827                      |

### Application

|                     |              |
|---------------------|--------------|
| Reactivity:         | Human, Mouse |
| Tested Application: | ELISA, WB    |

Recommended dilution: WB: 1:500 - 1:2000

Image:



various lysates were subjected to SDS PAGE followed by western blot with FNab10760(CD138 antibody) at dilution of 1:1000