

RCC1L antibody

Product Information

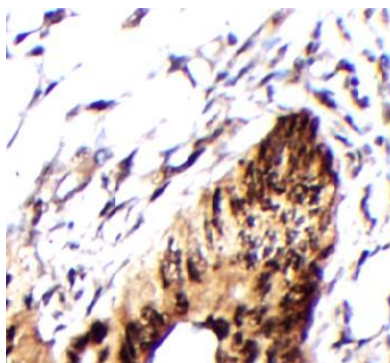
Catalog No.:	FNab10745
Size:	100µg
Form:	liquid
Purification:	Immunogen affinity purified
Purity:	≥95% as determined by SDS-PAGE
Host:	Rabbit
Clonality:	polyclonal
Clone ID:	None
IsoType:	IgG
Storage:	PBS with 0.02% sodium azide and 50% glycerol pH 7.3, -20°C for 12 months(Avoid repeated freeze / thaw cycles.)

Immunogen information

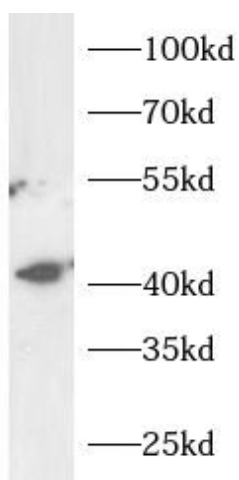
Immunogen:	Williams-Beuren syndrome chromosome region 16
Synonyms:	RCC1-like G exchanging factor-like protein (RCC1-like) Williams-Beuren syndrome chromosomal region 16 protein RCC1L WBSCR16
Observed MW:	40-50 kDa
Uniprot ID :	Q96I51

Application

Reactivity:	Human, Rat
Tested Application:	ELISA, IHC, WB
Recommended dilution:	WB: 1:500-1:2000; IHC: 1:20-1:200
Image:	



Immunohistochemistry of paraffin-embedded human colon cancer tissue slide using FNab10745(WBSCR16 antibody) at dilution of 1:100



HeLa cell lysates were subjected to SDS PAGE followed by western blot with FNab10745(WBSCR16 antibody) at dilution of 1:1000