

## GLUT4 antibody

### Product Information

Catalog No.:	FNab10684
Size:	100µg
Form:	liquid
Purification:	Protein A+G purification
Purity:	≥95% as determined by SDS-PAGE
Host:	Mouse
Clonality:	monoclonal
Clone ID:	4G1
IsoType:	IgG2b
Storage:	PBS with 0.02% sodium azide and 50% glycerol pH 7.3, -20°C for 12 months (Avoid repeated freeze / thaw cycles.)

### Background

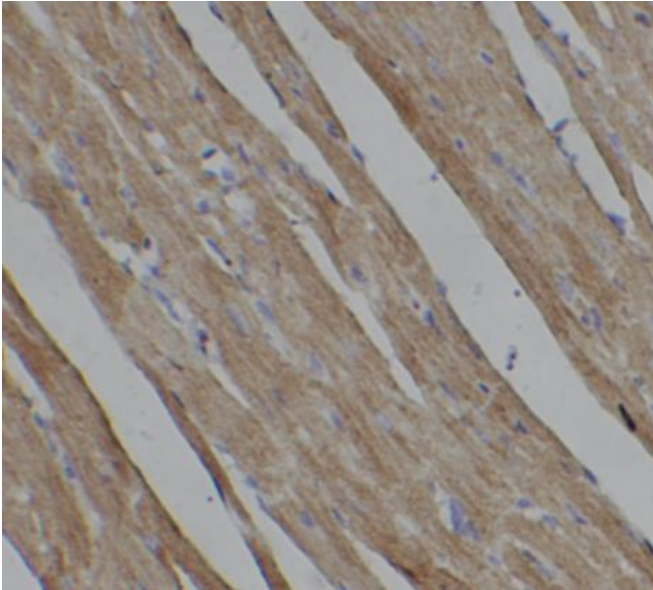
This gene is a member of the solute carrier family 2 (facilitated glucose transporter) family and encodes a protein that functions as an insulin-regulated facilitative glucose transporter. In the absence of insulin, this integral membrane protein is sequestered within the cells of muscle and adipose tissue. Within minutes of insulin stimulation, the protein moves to the cell surface and begins to transport glucose across the cell membrane. Mutations in this gene have been associated with noninsulin-dependent diabetes mellitus (NIDDM).

### Immunogen information

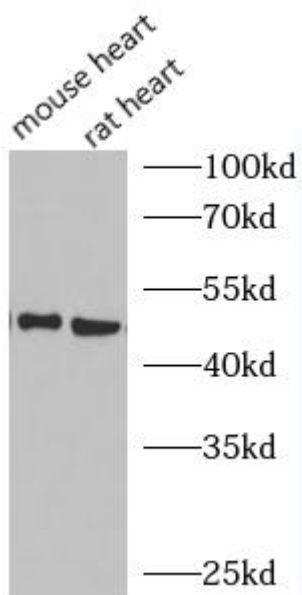
Immunogen:	solute carrier family 2 (facilitated glucose transporter), member 4
Synonyms:	GLUT 4, GLUT4, SLC2A4
Observed MW:	55 kDa
Uniprot ID :	P14672

### Application

Reactivity:	Human, Mouse, Rat
Tested Application:	ELISA, WB, IHC, IF
Recommended dilution:	WB: 1:500 - 1:2000; IHC: 1:50 - 1:200; IF: 1:50-1:200
Image:	



Immunohistochemistry of paraffin-embedded mouse heart tissue slide using FNab10684( GLUT4 antibody) at dilution of 1:100



various lysates were subjected to SDS PAGE followed by western blot with FNab10684(GLUT4 antibody) at dilution of 1:1000