

PHF-1 antibody

Product Information

| | |
|---------------|---|
| Catalog No.: | FNab10677 |
| Size: | 100µg |
| Form: | liquid |
| Purification: | Immunogen affinity purified |
| Purity: | ≥95% as determined by SDS-PAGE |
| Host: | Rabbit |
| Clonality: | polyclonal |
| IsoType: | IgG |
| Storage: | PBS with 0.02% sodium azide and 50% glycerol pH 7.3, -20°C for 12 months (Avoid repeated freeze / thaw cycles.) |

Background

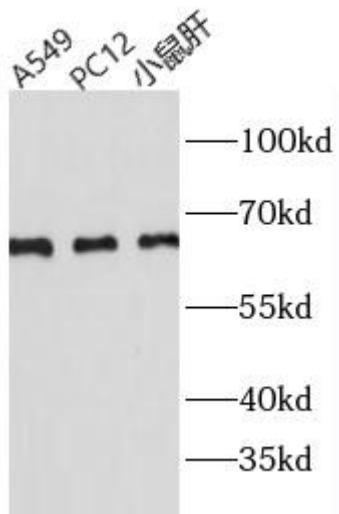
Plant homeodomain finger protein 1 (PHF1) has a specific role in histone modification and in non-homologous end joining. It is a human homolog of the Drosophila protein Polycomb-like protein. PHF1 acts by binding to H3K36me3, a mark for transcriptional activation, and recruiting the PRC2 complex: it is however unclear whether recruitment of the PRC2 complex to H3K36me3 leads to enhance or inhibit H3K27me3 methylation mediated by the PRC2 complex. PHF1 regulates also p53/TP53 stability.

Immunogen information

| | |
|--------------|---|
| Immunogen: | PHD finger protein 1 |
| Synonyms: | MTF2L2, PCL1, PHD finger protein 1, PHF1, PHF2, Polycomb like protein 1, Protein PHF1 |
| Observed MW: | 62-70 kDa |
| Uniprot ID : | O43189 |

Application

| | |
|---------------------------|-------------------|
| Reactivity: | Human, Mouse, Rat |
| Tested Application: | ELISA, WB |
| Recommended dilution: WB: | 1:500-1:2000 |
| Image: | |



Various lysates were subjected to SDS PAGE followed by western blot with FNab10677(PHF-1 antibody) at dilution of 1:1000