

LOXL2 antibody

Product Information

Catalog No.:	FNab10512
Size:	100µg
Form:	liquid
Purification:	Immunogen affinity purified
Purity:	≥95% as determined by SDS-PAGE
Host:	Rabbit
Clonality:	polyclonal
Clone ID:	None
IsoType:	IgG
Storage:	PBS with 0.02% sodium azide and 50% glycerol pH 7.3, -20°C for 12 months(Avoid repeated freeze / thaw cycles.)

Background

This gene encodes a member of the lysyl oxidase gene family. The prototypic member of the family is essential to the biogenesis of connective tissue, encoding an extracellular copper-dependent amine oxidase that catalyses the first step in the formation of crosslinks in collagens and elastin. A highly conserved amino acid sequence at the C-terminus end appears to be sufficient for amine oxidase activity, suggesting that each family member may retain this function. The N-terminus is poorly conserved and may impart additional roles in developmental regulation, senescence, tumor suppression, cell growth control, and chemotaxis to each member of the family.

Immunogen information

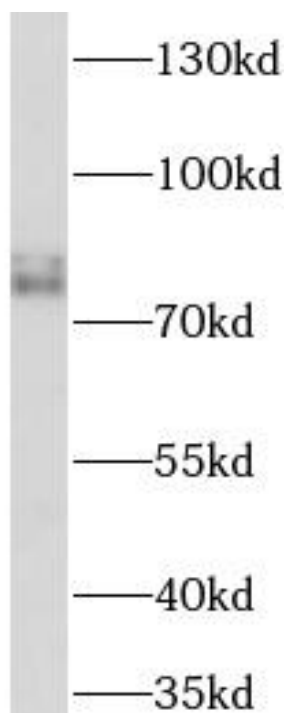
Immunogen:	Lysyl oxidase homolog 2
Synonyms:	Lysyl oxidase homolog 2 Lysyl oxidase-like protein 2 Lysyl oxidase-related protein 2 Lysyl oxidase-related protein WS9-14 LOXL2
Observed MW:	87-100 kDa
Uniprot ID :	Q9Y4K0

Application

Reactivity:	Human, Mouse, Rat
Tested Application:	ELISA, WB, IHC

Recommended dilution: WB: 1:500-1:2000; IHC: 1:50-1:200

Image:



Mouse heart tissue were subjected to SDS PAGE followed by western blot with FNab10512(LOXL2 antibody) at dilution of 1:1000