

PMCH antibody

Product Information

Catalog No.:	FNab10484
Size:	100µg
Form:	liquid
Purification:	Immunogen affinity purified
Purity:	≥95% as determined by SDS-PAGE
Host:	Rabbit
Clonality:	polyclonal
Clone ID:	None
IsoType:	IgG
Storage:	PBS with 0.02% sodium azide and 50% glycerol pH 7.3, -20°C for 12 months(Avoid repeated freeze / thaw cycles.)

Background

This gene encodes a preproprotein that is proteolytically processed to generate multiple protein products. These products include melanin-concentrating hormone (MCH), neuropeptide-glutamic acid-isoleucine (NEI), and neuropeptide-glycine-glutamic acid (NGE). Melanin-concentrating hormone is a 19-amino acid neuropeptide that stimulates hunger and may additionally regulate energy homeostasis, reproductive function, and sleep. Pseudogenes of this gene have been identified on chromosome 5.

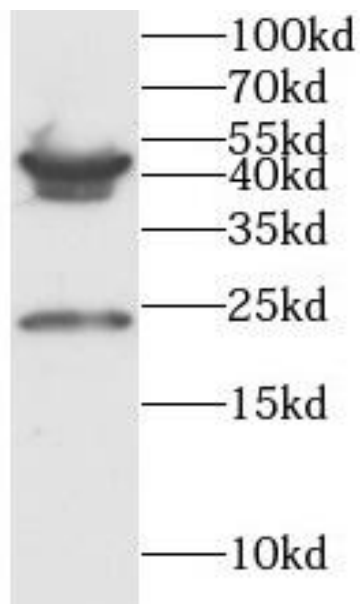
Immunogen information

Immunogen:	Pro-MCH
Synonyms:	Pro-MCH Neuropeptide-glycine-glutamic acid (NGE, Neuropeptide G-E) Neuropeptide-glutamic acid-isoleucine (NEI, Neuropeptide E-I) Melanin-concentrating hormone (MCH) PMCH MCH
Observed MW:	19 kDa
Uniprot ID :	P20382

Application

Reactivity:	Human, Mouse
Tested Application:	ELISA, WB
Recommended dilution: WB:	1:500-1:2000

Image:



mouse liver tissue were subjected to SDS PAGE followed by western blot with FNab10484(PMCH antibody) at dilution of 1:1000