

SLC1A2 antibody

Product Information

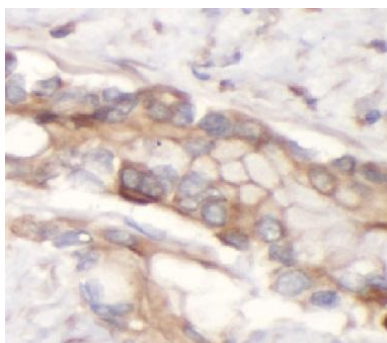
Catalog No.:	FNab10455
Size:	100µg
Form:	liquid
Purification:	Immunogen affinity purified
Purity:	≥95% as determined by SDS-PAGE
Host:	Rabbit
Clonality:	polyclonal
Clone ID:	None
IsoType:	IgG
Storage:	PBS with 0.02% sodium azide and 50% glycerol pH 7.3, -20°C for 12 months(Avoid repeated freeze / thaw cycles.)

Immunogen information

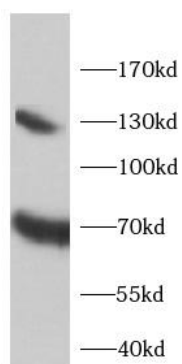
Immunogen:	solute carrier family 1(glial high affinity glutamate transporter), member 2
Synonyms:	Excitatory amino acid transporter 2 Glutamate/aspartate transporter II Sodium-dependent glutamate/aspartate transporter 2 Solute carrier family 1 member 2 SLC1A2 EAAT2 GLT1
Observed MW:	70 kDa, 130 kDa
Uniprot ID :	P43004

Application

Reactivity:	Human, Mouse, Rat
Tested Application:	ELISA, WB, IHC
Recommended dilution:	WB: 1:500-1:2000; IHC: 1:20-1:200
Image:	



Immunohistochemistry of paraffin-embedded human pancreas using FNab10455(EAAT2 antibody) at dilution of 1:50



293T cells were subjected to SDS PAGE followed by western blot with FNab10455(EAAT2 antibody) at dilution of 1:1000