

## ENPP2 antibody

### Product Information

Catalog No.:	FNab10430
Size:	100µg
Form:	liquid
Purification:	Immunogen affinity purified
Purity:	≥95% as determined by SDS-PAGE
Host:	Rabbit
Clonality:	polyclonal
Clone ID:	None
IsoType:	IgG
Storage:	PBS with 0.02% sodium azide and 50% glycerol pH 7.3, -20°C for 12 months(Avoid repeated freeze / thaw cycles.)

### Background

Hydrolyzes lysophospholipids to produce lysophosphatidic acid(LPA) in extracellular fluids. Major substrate is lysophosphatidylcholine. Also can act on sphingosylphosphorylcholine producing sphingosine-1-phosphate, a modulator of cell motility. Can hydrolyze, in vitro, bis-pNPP, to some extent pNP-TMP, and barely ATP. Involved in several motility-related processes such as angiogenesis and neurite outgrowth. Acts as an angiogenic factor by stimulating migration of smooth muscle cells and microtubule formation. Stimulates migration of melanoma cells, probably via a pertussis toxin-sensitive G protein. May have a role in induction of parturition. Possible involvement in cell proliferation and adipose tissue development. Tumor cell motility-stimulating factor.

### Immunogen information

Immunogen:	ectonucleotide pyrophosphatase/phosphodiesterase 2
Synonyms:	Ectonucleotide pyrophosphatase/phosphodiesterase family member 2 (ENPP 2) Autotaxin Extracellular lysophospholipase D (LysoPLD) ENPP2 ATX PDNP2
Observed MW:	50 kDa, 60 kDa, 110-120 kDa
Uniprot ID :	Q13822

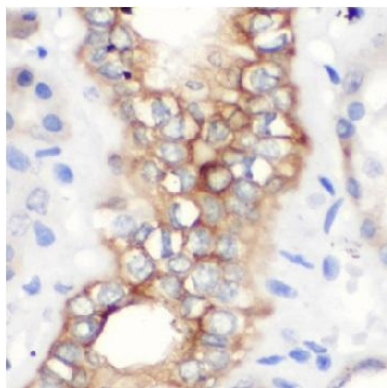
### Application

Reactivity:	Human, Mouse, Rat
-------------	-------------------

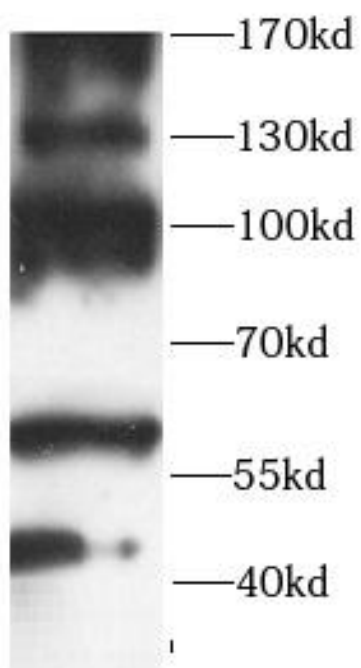
Tested Application: ELISA, WB, IHC

Recommended dilution: WB: 1:500-1:1000; IHC: 1:20-1:200

Image:



Immunohistochemistry of paraffin-embedded human kidney tissue slide using FNab10430(ENPP2 Antibody) at dilution of 1:50



A549 cells were subjected to SDS PAGE followed by western blot with FNab10430(ENPP2 antibody) at dilution of 1:500