

## anti- Beclin 1 antibody

### Product Information

Catalog No.:	FNab10414
Size:	100µg
Form:	liquid
Purification:	Immunogen affinity purified
Purity:	≥95% as determined by SDS-PAGE
Host:	Rabbit
Clonality:	polyclonal
IsoType:	IgG
Storage:	PBS with 0.02% sodium azide and 50% glycerol pH 7.3, -20°C for 12 months (Avoid repeated freeze / thaw cycles.)

### Background

Beclin-1(BECN1), also known as ATG6 or VPS30, has a central role in autophagy, a process of programmed cell survival, which is increased during periods of cell stress and extinguished during the cell cycle. Beclin-1, may play a role in antiviral host defense. It protects against infection by a neurovirulent strain of Sindbis virus. Beclin-1 participates in the regulation of autophagy and has an important role in development, tumorigenesis, and neurodegeneration. A progressively reduced Beclin-1 expression is reported to correlate with the primary tumor growth of squamous cell carcinoma and adenocarcinoma of the lung. Caspase-mediated cleavage of Beclin 1 promotes crosstalk between apoptosis and autophagy.

### Immunogen information

Immunogen:	beclin 1, autophagy related
Synonyms:	ATG6, Beclin 1, beclin 1, autophagy related, beclin1, BECN1, GT197, Protein GT197, VPS30
Observed MW:	52-60 kDa
Uniprot ID :	Q14457

### Application

Reactivity:	Human, Mouse, Rat
-------------	-------------------

### Wuhan Fine Biotech Co., Ltd.

B9 Bld, High-Tech Medical Devices Park, No. 818 Gaoxin Ave. East Lake High-Tech Development Zone. Wuhan, Hubei, China(430206)

Tel : (0086)027-87384275

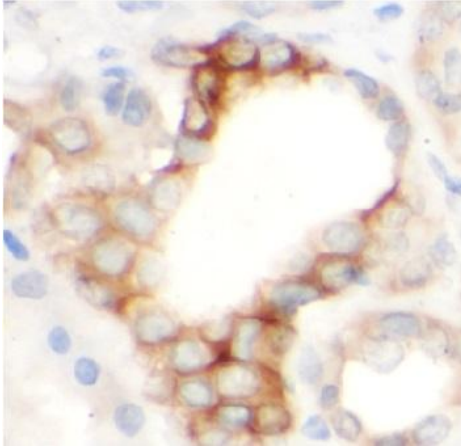
Fax: (0086)027-87800889

[www.fn-test.com](http://www.fn-test.com)

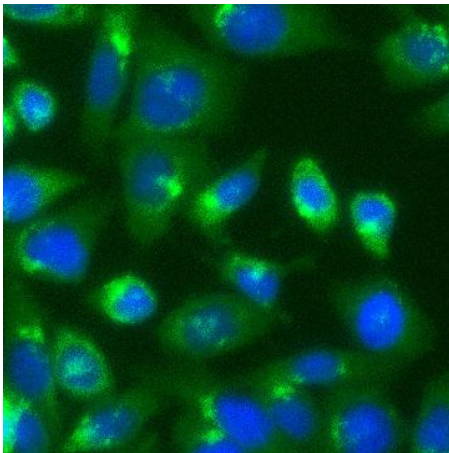
Tested Application: ELISA, WB, IHC, IF

Recommended dilution: WB: 1:500 - 1:2000; IHC: 1:50 - 1:200; IF: 1:20 - 1:200

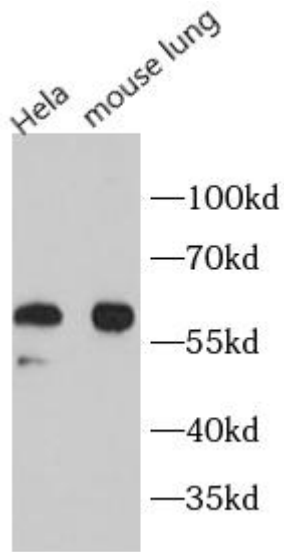
Image:



Immunohistochemistry of paraffin-embedded human kidney using FNab10414(Beclin 1 antibody) at dilution of 1:50



Immunofluorescent analysis of HeLa cells using FNab10414 (Beclin 1 antibody) at dilution of 1:50 and FITC-conjugated Goat Anti-Rabbit IgG(H+L).



Various lysates were subjected to SDS PAGE followed by western blot with FNab10414(Beclin 1 Antibody) at dilution of 1:1000