

## ARL13B antibody

### Product Information

Catalog No.:	FNab10390
Size:	100µg
Form:	liquid
Purification:	Immunogen affinity purified
Purity:	≥95% as determined by SDS-PAGE
Host:	Rabbit
Clonality:	polyclonal
Clone ID:	None
IsoType:	IgG
Storage:	PBS with 0.02% sodium azide and 50% glycerol pH 7.3, -20°C for 12 months(Avoid repeated freeze / thaw cycles.)

### Background

Cilium-specific protein required to control the microtubule-based, ciliary axoneme structure. May act by maintaining the association between IFT subcomplexes A and B. Binds GTP but is not able to hydrolyze it; the GTPase activity remains unclear. Required to pattern the neural tube. Involved in cerebral cortex development: required for the initial formation of a polarized radial glial scaffold, the first step in the construction of the cerebral cortex, by regulating ciliary signaling. Regulates the migration and placement of postmitotic interneurons in the developing cerebral cortex. May regulate endocytic recycling traffic; however, additional evidences are required to confirm these data.

### Immunogen information

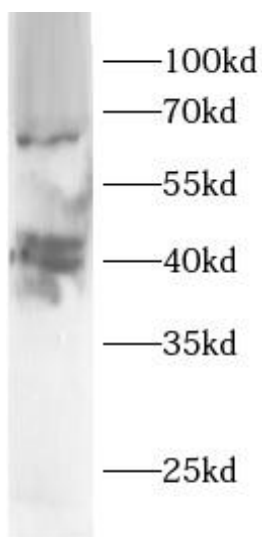
Immunogen:	ADP-ribosylation factor-like 13B
Synonyms:	ADP-ribosylation factor-like protein 13B ADP-ribosylation factor-like protein 2-like 1 (ARL2-like protein 1) ARL13B ARL2L1
Observed MW:	40-48 kDa, 60 kDa
Uniprot ID :	Q3SXY8

### Application

Reactivity:	Human, Mouse, Rat
Tested Application:	ELISA, WB

Recommended dilution: WB: 1:500-1:2000

Image:



mouse liver tissue were subjected to SDS PAGE followed by western blot with FNab10390(ARL13B Antibody) at dilution of 1:1000