

CHM antibody

Product Information

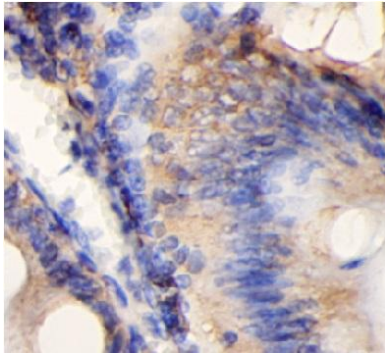
Catalog No.:	FNab10380
Size:	100µg
Form:	liquid
Purification:	Immunogen affinity purified
Purity:	≥95% as determined by SDS-PAGE
Host:	Rabbit
Clonality:	polyclonal
Clone ID:	None
IsoType:	IgG
Storage:	PBS with 0.02% sodium azide and 50% glycerol pH 7.3, -20°C for 12 months(Avoid repeated freeze / thaw cycles.)

Immunogen information

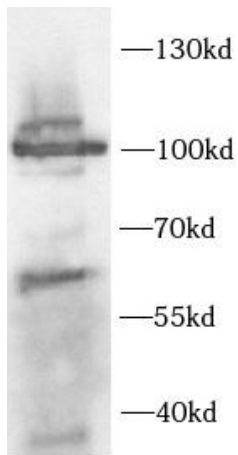
Immunogen:	Rab proteins geranylgeranyltransferase component A 1
Synonyms:	Rab proteins geranylgeranyltransferase component A 1 Choroideremia protein Rab escort protein 1 (REP-1) TCD protein CHM REP1 TCD
Observed MW:	100 kDa, 60 kDa
Uniprot ID :	P24386

Application

Reactivity:	Human
Tested Application:	ELISA, WB, IHC
Recommended dilution:	WB: 1:500-1:2000; IHC: 1:20-1:200
Image:	



Immunohistochemistry of paraffin-embedded human colon cancer using FNab10380(CHM antibody) at dilution of 1:100



HEK293 cells were subjected to SDS PAGE followed by western blot with FNab10380(CHM antibody) at dilution of 1:500