

## AP2M1 antibody

### Product Information

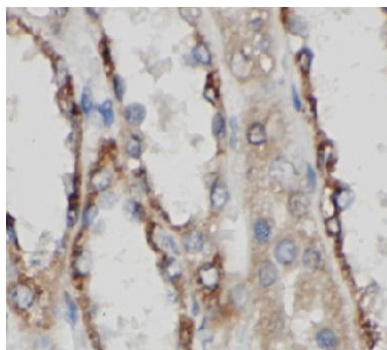
Catalog No.:	FNab10360
Size:	100µg
Form:	liquid
Purification:	Immunogen affinity purified
Purity:	≥95% as determined by SDS-PAGE
Host:	Rabbit
Clonality:	polyclonal
Clone ID:	None
IsoType:	IgG
Storage:	PBS with 0.02% sodium azide and 50% glycerol pH 7.3, -20°C for 12 months (Avoid repeated freeze / thaw cycles.)

### Immunogen information

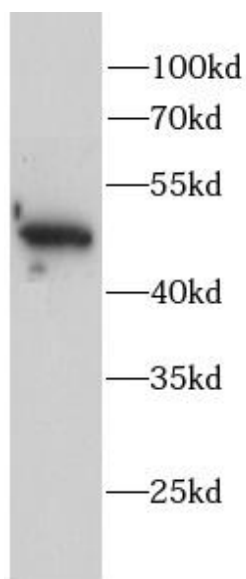
Immunogen:	adaptor-related protein complex 2, mu 1 subunit
Synonyms:	AP-2 complex subunit mu AP-2 mu chain Adaptin-mu2 Adaptor protein complex AP-2 subunit mu Adaptor-related protein complex 2 subunit mu Clathrin assembly protein complex 2 mu medium chain Clathrin coat assembly protein AP50 Clathrin coat-associated protein AP50 HA2 50 kDa subunit Plasma membrane adaptor AP-2 50 kDa protein AP2M1 CLAPM1 KIAA0109
Observed MW:	50 kDa
Uniprot ID :	Q96CW1

### Application

Reactivity:	Human, Mouse
Tested Application:	ELISA, WB, IHC
Recommended dilution:	WB: 1:500-1:2000; IHC: 1:20-1:200
Image:	



Immunohistochemistry of paraffin-embedded human kidney using FNab10360(AP2M1 antibody) at dilution of 1:100



Mouse brain were subjected to SDS PAGE followed by western blot with FNab10360(AP2M1 antibody) at dilution of 1:1000