

RHEB antibody

Product Information

Catalog No.:	FNab10357
Size:	100µg
Form:	liquid
Purification:	Immunogen affinity purified
Purity:	≥95% as determined by SDS-PAGE
Host:	Rabbit
Clonality:	polyclonal
Clone ID:	None
IsoType:	IgG
Storage:	PBS with 0.02% sodium azide and 50% glycerol pH 7.3, -20°C for 12 months(Avoid repeated freeze / thaw cycles.)

Background

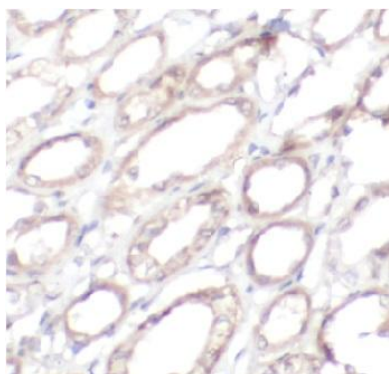
Activates the protein kinase activity of mTORC1, and thereby plays a role in the regulation of apoptosis. Stimulates the phosphorylation of S6K1 and EIF4EBP1 through activation of mTORC1 signaling. Has low intrinsic GTPase activity.

Immunogen information

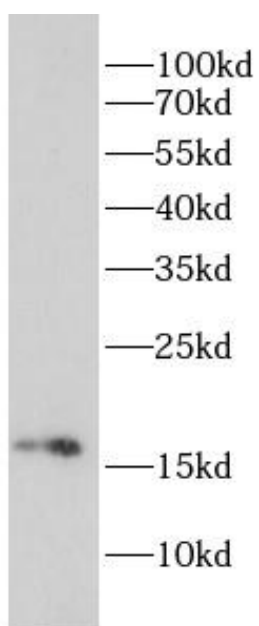
Immunogen:	Ras homolog enriched in brain
Synonyms:	GTP-binding protein Rheb Ras homolog enriched in brain RHEB RHEB2
Observed MW:	16 kDa
Uniprot ID :	Q15382

Application

Reactivity:	Human
Tested Application:	ELISA, WB, IHC
Recommended dilution:	WB: 1:500 - 1:2000; IHC: 1:20 - 1:200
Image:	



Immunohistochemistry of paraffin-embedded human kidney tissue slide using FNab10357(RHEB Antibody) at dilution of 1:100



Raji cells were subjected to SDS PAGE followed by western blot with FNab10357(RHEB Antibody) at dilution of 1:600