

PRKCG antibody

Product Information

Catalog No.:	FNab10313
Size:	100µg
Form:	liquid
Purification:	Immunogen affinity purified
Purity:	≥95% as determined by SDS-PAGE
Host:	Rabbit
Clonality:	polyclonal
Clone ID:	None
IsoType:	IgG
Storage:	PBS with 0.02% sodium azide and 50% glycerol pH 7.3, -20°C for 12 months(Avoid repeated freeze / thaw cycles.)

Background

Protein kinase C(PKC) is a family of serine-and threonine-specific protein kinases that can be activated by calcium and second messenger diacylglycerol. PKC family members phosphorylate a wide variety of protein targets and are known to be involved in diverse cellular signaling pathways. PKC gamma is a neuron-specific member of the classical PKCs and is activated and translocated to subcellular regions as a result of various stimuli, including diacylglycerol synthesis, increased intracellular Ca(2+) and phorbol esters. Defects in this protein have been associated with spinocerebellar ataxia type 14(SCA14), an autosomal dominant neurodegenerative disease.

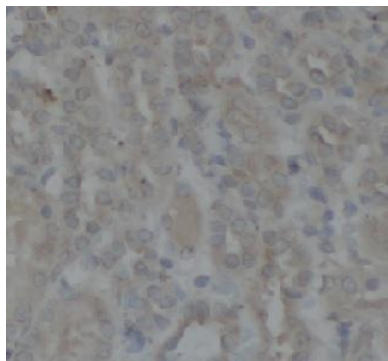
Immunogen information

Immunogen:	protein kinase C, gamma
Synonyms:	Protein kinase C gamma type (PKC-gamma) PRKCG PKCG
Observed MW:	78 kDa
Uniprot ID :	P05129

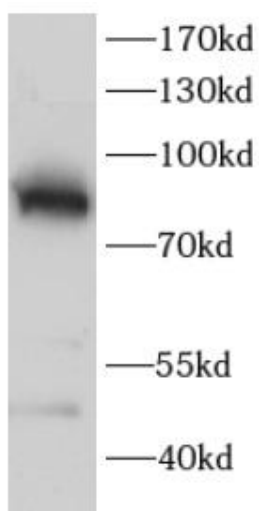
Application

Reactivity:	Human, Mouse, Rat
Tested Application:	ELISA, WB, IHC
Recommended dilution:	WB: 1:500 - 1:2000; IHC: 1:50 - 1:200

Image:



Immunohistochemistry of paraffin-embedded rat kidney tissue slide using FNab10313(PRKCG Antibody) at dilution of 1:100



mouse brain tissue were subjected to SDS PAGE followed by western blot with FNab10313(PRKCG antibody) at dilution of 1:1000