

BCL2L2 antibody

Product Information

Catalog No.:	FNab10311
Size:	100µg
Form:	liquid
Purification:	Immunogen affinity purified
Purity:	≥95% as determined by SDS-PAGE
Host:	Rabbit
Clonality:	polyclonal
Clone ID:	None
IsoType:	IgG
Storage:	PBS with 0.02% sodium azide and 50% glycerol pH 7.3, -20°C for 12 months(Avoid repeated freeze / thaw cycles.)

Background

This gene encodes a member of the BCL-2 protein family. The proteins of this family form hetero- or homodimers and act as anti- and pro-apoptotic regulators. Expression of this gene in cells has been shown to contribute to reduced cell apoptosis under cytotoxic conditions. Studies of the related gene in mice indicated a role in the survival of NGF- and BDNF-dependent neurons. Mutation and knockout studies of the mouse gene demonstrated an essential role in adult spermatogenesis. Alternative splicing results in multiple transcript variants. Read-through transcription also exists between this gene and the neighboring downstream PABPN1 (poly(A) binding protein, nuclear 1) gene.

Immunogen information

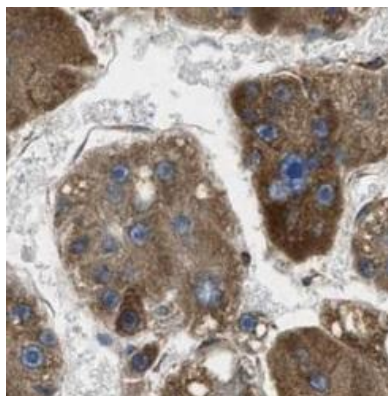
Immunogen:	BCL2-like 2
Synonyms:	Bcl-2-like protein 2 (Bcl2-L-2) Apoptosis regulator Bcl-W BCL2L2 BCLW KIAA0271
Observed MW:	21 kDa
Uniprot ID :	Q92843

Application

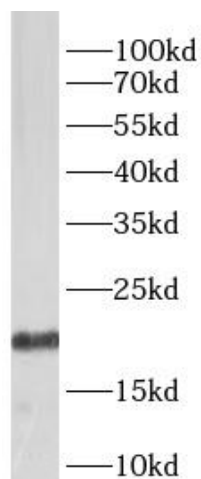
Reactivity:	Human, Mouse, Rat
Tested Application:	ELISA, WB, IHC

Recommended dilution: WB: 1:500 - 1:2000; IHC: 1:50 - 1:200

Image:



Immunohistochemistry of paraffin-embedded human liver cancer using FNab10311(BCL2L2 antibody) at dilution of 1:100



HL-60 cells were subjected to SDS PAGE followed by western blot with FNab10311(BCL2L2 antibody) at dilution of 1:1000