

## SLC6A4 antibody

### Product Information

Catalog No.:	FNab10277
Size:	100µg
Form:	liquid
Purification:	Immunogen affinity purified
Purity:	≥95% as determined by SDS-PAGE
Host:	Rabbit
Clonality:	polyclonal
Clone ID:	None
IsoType:	IgG
Storage:	PBS with 0.02% sodium azide and 50% glycerol pH 7.3, -20°C for 12 months (Avoid repeated freeze / thaw cycles.)

### Background

This gene encodes an integral membrane protein that transports the neurotransmitter serotonin from synaptic spaces into presynaptic neurons. The encoded protein terminates the action of serotonin and recycles it in a sodium-dependent manner. This protein is a target of psychomotor stimulants, such as amphetamines and cocaine, and is a member of the sodium:neurotransmitter symporter family. A repeat length polymorphism in the promoter of this gene has been shown to affect the rate of serotonin uptake and may play a role in sudden infant death syndrome, aggressive behavior in Alzheimer disease patients, and depression-susceptibility in people experiencing emotional trauma.

### Immunogen information

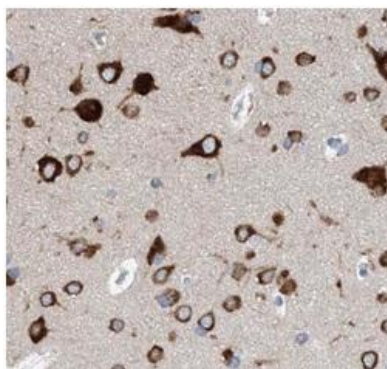
Immunogen:	Solute carrier family 6 member 4
Synonyms:	Sodium-dependent serotonin transporter (SERT) 5HT transporter (5HTT) Solute carrier family 6 member 4 SLC6A4 HTT SERT
Observed MW:	74 kDa
Uniprot ID :	P31645

### Application

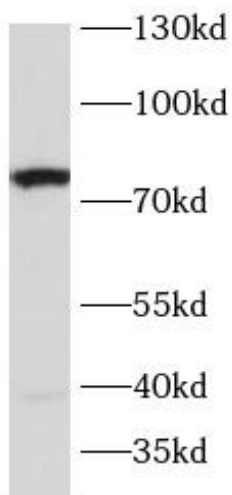
Reactivity:	Human, Mouse, Rat
Tested Application:	ELISA, IHC, WB

Recommended dilution: WB: 1:500 - 1:2000; IHC: 1:50 - 1:200

Image:



Immunohistochemistry of paraffin-embedded mouse brain using FNab10277(SLC6A4 antibody) at dilution of 1:100



rat brain were subjected to SDS PAGE followed by western blot with FNab10277(SLC6A4 antibody) at dilution of 1:1000