

## PPP1CA antibody

### Product Information

Catalog No.:	FNab10274
Size:	100µg
Form:	liquid
Purification:	Immunogen affinity purified
Purity:	≥95% as determined by SDS-PAGE
Host:	Rabbit
Clonality:	polyclonal
Clone ID:	None
IsoType:	IgG
Storage:	PBS with 0.02% sodium azide and 50% glycerol pH 7.3, -20°C for 12 months(Avoid repeated freeze / thaw cycles.)

### Background

The protein encoded by this gene is one of the three catalytic subunits of protein phosphatase 1 (PP1). PP1 is a serine/threonine specific protein phosphatase known to be involved in the regulation of a variety of cellular processes, such as cell division, glycogen metabolism, muscle contractility, protein synthesis, and HIV-1 viral transcription. Increased PP1 activity has been observed in the end stage of heart failure. Studies in both human and mice suggest that PP1 is an important regulator of cardiac function. Mouse studies also suggest that PP1 functions as a suppressor of learning and memory. Three alternatively spliced transcript variants encoding different isoforms have been found for this gene.

### Immunogen information

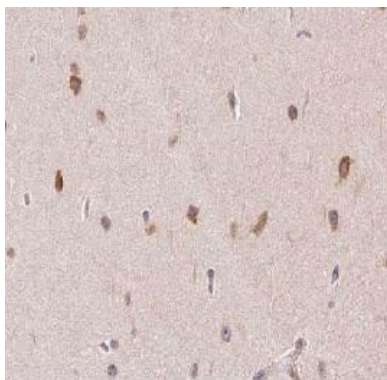
Immunogen:	protein phosphatase 1, catalytic subunit, alpha isoform
Synonyms:	Serine/threonine-protein phosphatase PP1-alpha catalytic subunit (PP-1A) PPP1CA PPP1A
Observed MW:	38 kDa
Uniprot ID :	P62136

### Application

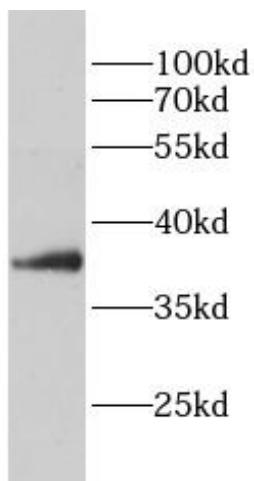
Reactivity:	Human, Mouse
Tested Application:	ELISA, WB, IHC

Recommended dilution: WB: 1:500 - 1:2000; IHC: 1:50 - 1:200

Image:



Immunohistochemistry of paraffin-embedded mouse brain tissue slide using FNab10274 (PP1A Antibody) at dilution of 1:100



HepG2 cells were subjected to SDS PAGE followed by western blot with FNab10274 (PP1A antibody) at dilution of 1:1000