

## GCLM antibody

### Product Information

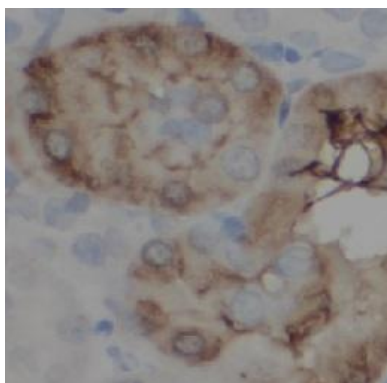
Catalog No.:	FNab10249
Size:	100µg
Form:	liquid
Purification:	Immunogen affinity purified
Purity:	≥95% as determined by SDS-PAGE
Host:	Rabbit
Clonality:	polyclonal
Clone ID:	None
IsoType:	IgG
Storage:	PBS with 0.02% sodium azide and 50% glycerol pH 7.3, -20°C for 12 months(Avoid repeated freeze / thaw cycles.)

### Immunogen information

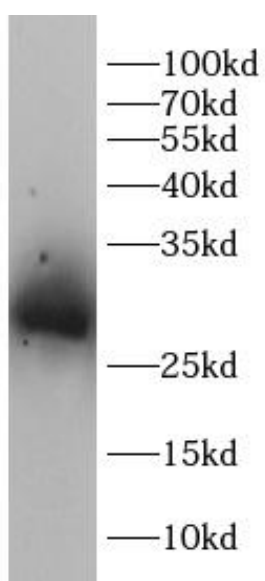
Immunogen:	glutamate-cysteine ligase, modifier subunit
Synonyms:	Glutamate--cysteine ligase regulatory subunit GCS light chain Gamma-ECS regulatory subunit Gamma-glutamylcysteine synthetase regulatory subunit Glutamate--cysteine ligase modifier subunit GCLM GLCLR
Observed MW:	31 kDa
Uniprot ID :	P48507

### Application

Reactivity:	Human, Mouse, Rat
Tested Application:	ELISA, WB, IHC
Recommended dilution:	WB: 1:500-1:2000;IHC: 1:50-1:500
Image:	



Immunohistochemistry of paraffin-embedded rat kidney tissue slide using FNab10249(GCLM Antibody) at dilution of 1:100



mouse liver were subjected to SDS PAGE followed by western blot with FNab10249(GCLM antibody) at dilution of 1:1000