

## TRAM1 antibody

### Product Information

|               |  |
|---------------|--|
| Catalog No.:  | FNab10225  |
| Size:         | 100µg  |
| Form:         | liquid   |
| Purification: | Immunogen affinity purified  |
| Purity:       | ≥95% as determined by SDS-PAGE   |
| Host:         | Rabbit   |
| Clonality:    | polyclonal   |
| Clone ID:     | None   |
| IsoType:      | IgG  |
| Storage:      | PBS with 0.02% sodium azide and 50% glycerol pH 7.3, -20°C for 12 months(Avoid repeated freeze / thaw cycles.) |

### Background

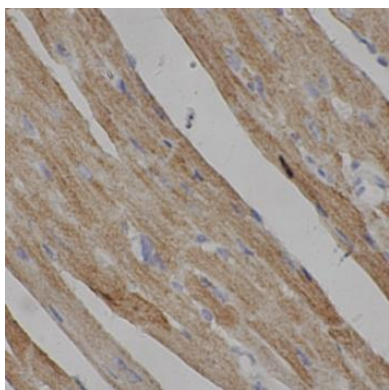
None

### Immunogen information

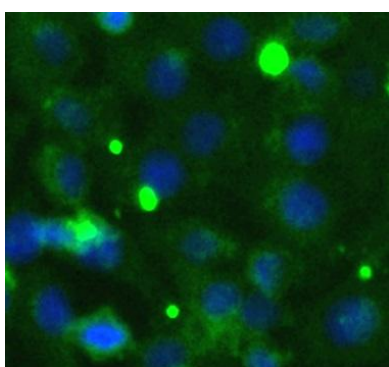
|              |  |
|--------------|--|
| Immunogen:   | Translocating chain-associated membrane protein 1                            |
| Synonyms:    | Translocating chain-associated membrane protein 1 (Protein TRAM1) TRAM1 TRAM |
| Observed MW: | 43 kDa   |
| Uniprot ID : | Q15629   |

### Application

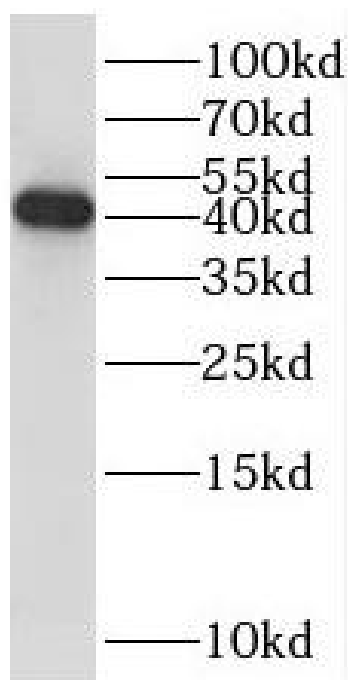
|                       |   |
|-----------------------|---|
| Reactivity:           | Human, Mouse                                      |
| Tested Application:   | ELISA, WB, IHC, IF                                |
| Recommended dilution: | WB: 1:200-1:2000; IHC: 1:50-1:200; IF: 1:50-1:200 |
| Image:                |   |



Immunohistochemistry of paraffin-embedded mouse heart tissue slide using FNab10225(tram1 antibody) at dilution of 1:200



Immunofluorescent analysis of Hela cells using tram1 antibody(FNab10225) at 1:50 dilution.



Hela cells were subjected to SDS PAGE followed by western blot with FNab10225(tram1 antibody) at dilution of 1:1000