

PLCB1 antibody

Product Information

Catalog No.:	FNab10119
Size:	100µg
Form:	liquid
Purification:	Immunogen affinity purified
Purity:	≥95% as determined by SDS-PAGE
Host:	Rabbit
Clonality:	polyclonal
Clone ID:	None
IsoType:	IgG
Storage:	PBS with 0.02% sodium azide and 50% glycerol pH 7.3, -20°C for 12 months(Avoid repeated freeze / thaw cycles.)

Background

The protein encoded by this gene catalyzes the formation of inositol 1,4,5-trisphosphate and diacylglycerol from phosphatidylinositol 4,5-bisphosphate. This reaction uses calcium as a cofactor and plays an important role in the intracellular transduction of many extracellular signals. This gene is activated by two G-protein alpha subunits, alpha-q and alpha-11. Two transcript variants encoding different isoforms have been found for this gene.

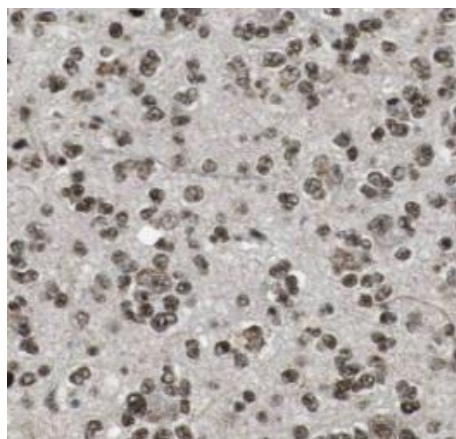
Immunogen information

Immunogen:	phospholipase C, beta 1
Synonyms:	1-phosphatidylinositol 4,5-bisphosphate phosphodiesterase beta-1 PLC-154 Phosphoinositide phospholipase C-beta-1 Phospholipase C-I (PLC-I) Phospholipase C-beta-1 (PLC-beta-1) PLCB1 KIAA0581
Observed MW:	139 kDa
Uniprot ID :	Q9NQ66

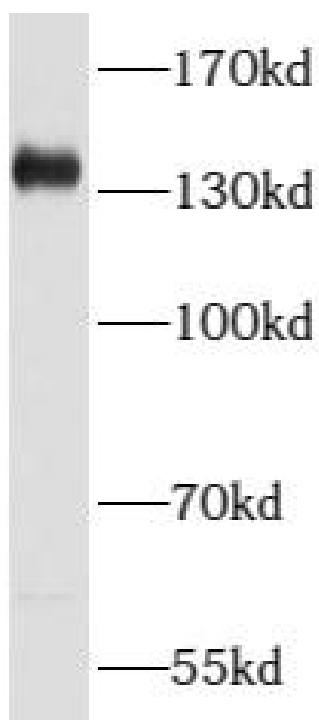
Application

Reactivity:	Human, Mouse, Rat
Tested Application:	ELISA, WB, IHC
Recommended dilution:	WB: 1:500 - 1:2000; IHC: 1:50 - 1:200

Image:



Immunohistochemistry of paraffin-embedded human gliomas tissue slide using FNab10119(PLCB1) antibody at dilution of 1:100



mouse brain tissue were subjected to SDS PAGE followed by western blot with FNab10119 (PLCB1 antibody) at dilution of 1:1000