

CBLIF antibody

Product Information

Catalog No.:	FNab10110
Size:	100µg
Form:	liquid
Purification:	Immunogen affinity purified
Purity:	≥95% as determined by SDS-PAGE
Host:	Rabbit
Clonality:	polyclonal
Clone ID:	None
IsoType:	IgG
Storage:	PBS with 0.02% sodium azide and 50% glycerol pH 7.3, -20°C for 12 months(Avoid repeated freeze / thaw cycles.)

Background

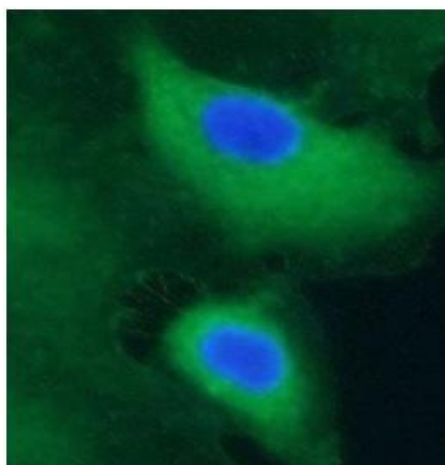
This gene is a member of the cobalamin transport protein family. It encodes a glycoprotein secreted by parietal cells of the gastric mucosa and is required for adequate absorption of vitamin B12. Vitamin B12 is necessary for erythrocyte maturation and mutations in this gene may lead to congenital pernicious anemia.

Immunogen information

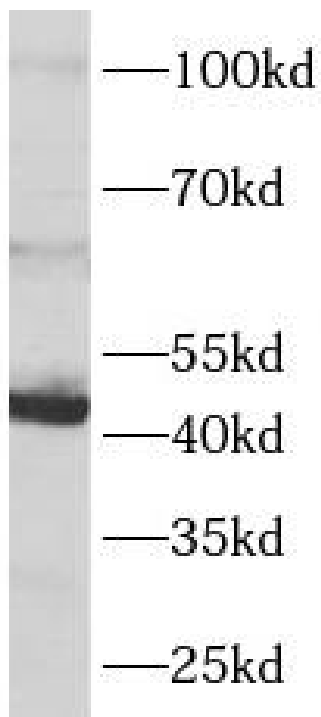
Immunogen:	GIF
Synonyms:	Cobalamin binding intrinsic factor Gastric intrinsic factor Intrinsic factor (IF, INF) CBLIF GIF IFMH
Observed MW:	45 kDa
Uniprot ID :	P27352

Application

Reactivity:	Human, Mouse
Tested Application:	ELISA, WB, IF
Recommended dilution:	WB: 1:500 - 1:2000; IF: 1:50 - 1:200
Image:	



Immunofluorescence analysis of A549 cells using FNab10110(GIF antibody). Blue: DAPI for nuclear staining.



Mouse heart were subjected to SDS PAGE followed by western blot with FNab10110(GIF antibody) at dilution of 1:1000