

KLF2 antibody

Product Information

| | |
|---------------|---|
| Catalog No.: | FNab10040 |
| Size: | 100µg |
| Form: | liquid |
| Purification: | Immunogen affinity purified |
| Purity: | ≥95% as determined by SDS-PAGE |
| Host: | Rabbit |
| Clonality: | polyclonal |
| Clone ID: | None |
| IsoType: | IgG |
| Storage: | PBS with 0.02% sodium azide and 50% glycerol pH 7.3, -20°C for 12 months (Avoid repeated freeze / thaw cycles.) |

Background

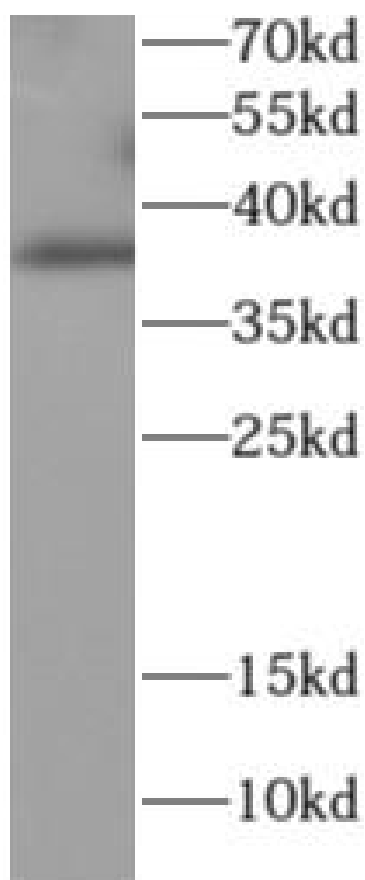
None

Immunogen information

| | |
|--------------|--|
| Immunogen: | Kruppel like factor 2 |
| Synonyms: | Krueppel-like factor 2 Lung krueppel-like factor KLF2 LKLF |
| Observed MW: | 37 kDa |
| Uniprot ID : | Q9Y5W3 |

Application

| | |
|---------------------------|--------------|
| Reactivity: | Human |
| Tested Application: | ELISA, WB |
| Recommended dilution: WB: | 1:200-1:2000 |
| Image: | |



U87MG cells were subjected to SDS PAGE followed by western blot with FNab10040(KLF2 antibody) at dilution of 1:1000