

## anti- WEE1 antibody

### Product Information

Catalog No.:	FNab10017
Size:	100µg
Form:	liquid
Purification:	Immunogen affinity purified
Purity:	≥95% as determined by SDS-PAGE
Host:	Rabbit
Clonality:	polyclonal
Clone ID:	None
IsoType:	IgG
Storage:	PBS with 0.02% sodium azide and 50% glycerol pH 7.3, -20°C for 12 months (Avoid repeated freeze / thaw cycles.)

### Immunogen information

Immunogen:	WEE1 homolog
Synonyms:	WEE1, WEE1 homolog, Wee1 like protein kinase, WEE1A, Wee1A kinase, WEE1hu
Observed MW:	72 kDa
Uniprot ID :	P30291

### Application

Reactivity:	Human, Rat
Tested Application:	ELISA, WB, IHC
Recommended dilution:	WB: 1:200-1:2000; IHC: 1:50-1:500
Image:	

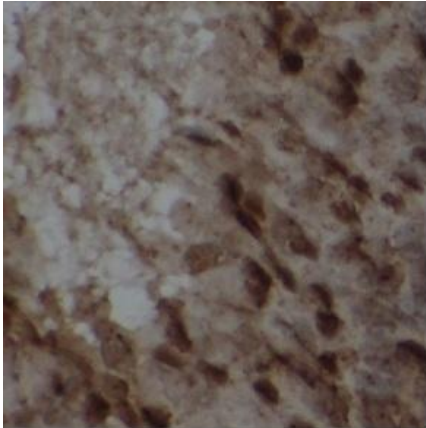
### Wuhan Fine Biotech Co., Ltd.

B9 Bld, High-Tech Medical Devices Park, No. 818 Gaoxin Ave. East Lake High-Tech Development Zone. Wuhan, Hubei, China(430206)

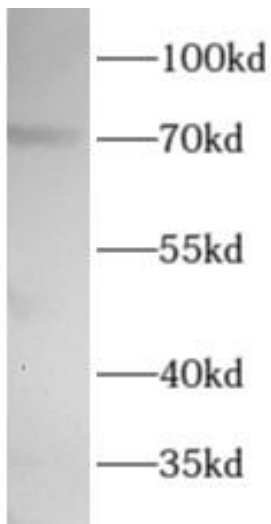
Tel : (0086)027-87384275

Fax: (0086)027-87800889

[www.fn-test.com](http://www.fn-test.com)



Immunohistochemistry of paraffin-embedded rat testis tissue slide using FNab10017(WEE1 Antibody) at dilution of 1:200



Jurkat cells were subjected to SDS PAGE followed by western blot with FNab10017( WEE1 Antibody) at dilution of 1:1000