

ITGAE antibody

Product Information

Catalog No.:	FNab09901
Size:	100µg
Form:	liquid
Purification:	Immunogen affinity purified
Purity:	≥95% as determined by SDS-PAGE
Host:	Rabbit
Clonality:	polyclonal
Clone ID:	None
IsoType:	IgG
Storage:	PBS with 0.02% sodium azide and 50% glycerol pH 7.3, -20°C for 12 months(Avoid repeated freeze / thaw cycles.)

Background

Integrins are heterodimeric integral membrane proteins composed of an alpha chain and a beta chain. This gene encodes an I-domain-containing alpha integrin that undergoes post-translational cleavage in the extracellular domain, yielding disulfide-linked heavy and light chains. In combination with the beta 7 integrin, this protein forms the E-cadherin binding integrin known as the human mucosal lymphocyte-1 antigen. This protein is preferentially expressed in human intestinal intraepithelial lymphocytes (IEL), and in addition to a role in adhesion, it may serve as an accessory molecule for IEL activation.

Immunogen information

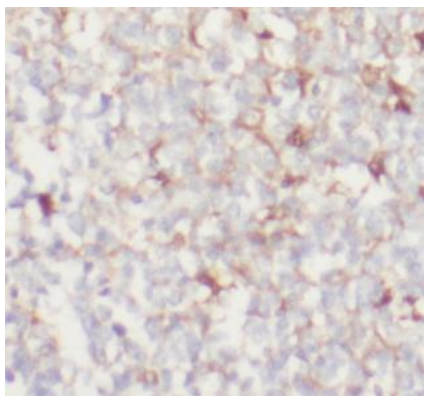
Immunogen:	ITGAE
Synonyms:	Integrin alpha-E HML-1 antigen Integrin alpha-IEL Mucosal lymphocyte 1 antigen Integrin alpha-E light chain Integrin alpha-E heavy chain ITGAE
Observed MW:	110 kDa
Uniprot ID :	P38570

Application

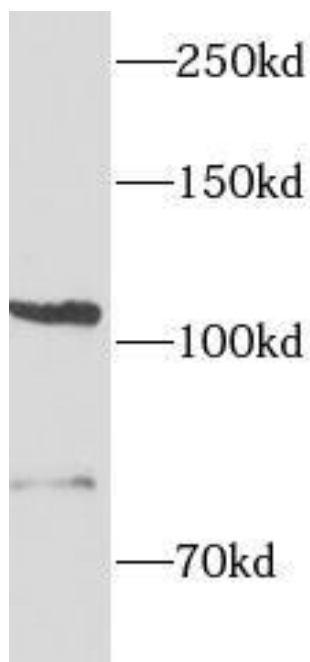
Reactivity:	Human, Mouse, Rat
Tested Application:	ELISA, WB, IHC

Recommended dilution: WB: 1:500 - 1:2000; IHC: 1:50 - 1:200

Image:



Immunohistochemistry of paraffin-embedded rat tonsil tissue slide using FNab09901(ITGAE antibody) at dilution of 1:100



HeLa cells were subjected to SDS PAGE followed by western blot with FNab09901(ITGAE antibody) at dilution of 1:1000