

anti- C1R antibody

Product Information

Catalog No.:	FNab09885
Size:	100µg
Form:	liquid
Purification:	Immunogen affinity purified
Purity:	≥95% as determined by SDS-PAGE
Host:	Rabbit
Clonality:	polyclonal
Clone ID:	None
IsoType:	IgG
Storage:	PBS with 0.02% sodium azide and 50% glycerol pH 7.3, -20°C for 12 months (Avoid repeated freeze / thaw cycles.)

Background

C1r B chain is a serine protease that combines with C1q and C1s to form C1, the first component of the classical pathway of the complement system. C1r is a single-chain glycoprotein which can be cleaved into an A chain and a B chain upon activation. This antibody recognizes full-length C1r chain and the cleaved B chain.

Immunogen information

Immunogen:	complement component 1, r subcomponent
Synonyms:	C1R, Complement C1r subcomponent
Observed MW:	80 kDa, 30 kDa
UniprotID :	P00736

Application

Reactivity:	Human, Mouse, Rat
Tested Application:	ELISA, WB, IHC
Recommended dilution:	WB: 1:500-1:2000; IHC: 1:50-1:500

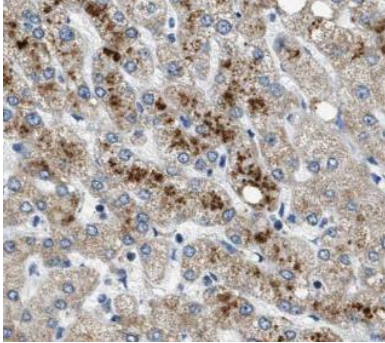
Wuhan Fine Biotech Co., Ltd.

B9 Bld, High-Tech Medical Devices Park, No. 818 GaoxinAve. East Lake High-Tech Development Zone. Wuhan, Hubei, China(430206)

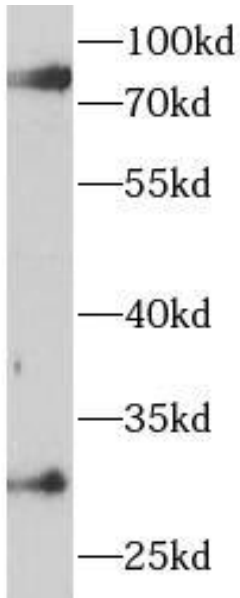
Tel : (0086)027-87384275

Fax: (0086)027-87800889 www.fn-test.com

Image:



Immunohistochemistry of paraffin-embedded human liver tissue slide using FNab09885(C1R Antibody) at dilution of 1:200



human blood tissue were subjected to SDS PAGE followed by western blot with FNab09885(C1R antibody) at dilution of 1:1000

Wuhan Fine Biotech Co., Ltd.

B9 Bld, High-Tech Medical Devices Park, No. 818 GaoxinAve. East Lake High-Tech Development Zone. Wuhan, Hubei, China(430206)

Tel : (0086)027-87384275

Fax: (0086)027-87800889 www.fn-test.com