

anti- GLUT1 antibody

Product Information

Catalog No.:	FNab09873
Size:	100µg
Form:	liquid
Purification:	protein A+G purified
Purity:	≥95% as determined by SDS-PAGE
Host:	Mouse
Clonality:	monoclonal
Clone ID:	4G6
IsoType:	IgG1
Storage:	PBS with 0.02% sodium azide and 50% glycerol pH 7.3, -20°C for 12 months (Avoid repeated freeze / thaw cycles.)

Background

Facilitative glucose transporter. This isoform may be responsible for constitutive or basal glucose uptake. Has a very broad substrate specificity; can transport a wide range of aldoses including both pentoses and hexoses.

Immunogen information

Immunogen:	solute carrier family 2(facilitated glucose transporter), member 1
Synonyms:	DYT17, DYT18, GLUT, GLUT 1, GLUT1, HepG2 glucose transporter, PED, SLC2A1
Observed MW:	45 kDa
UniprotID :	P11166

Application

Reactivity:	Human, Mouse
Tested Application:	ELISA, WB, IHC
Recommended dilution:	WB: 1:200-1:2000; IHC: 1:20-1:1000

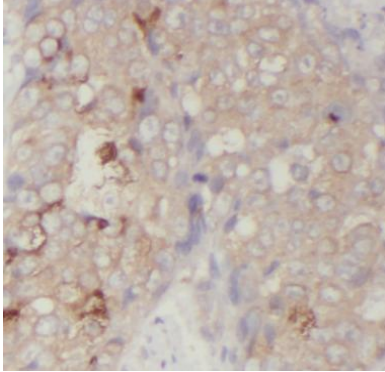
Wuhan Fine Biotech Co., Ltd.

B9 Bld, High-Tech Medical Devices Park, No. 818 GaoxinAve.East Lake High-Tech Development Zone.Wuhan, Hubei, China(430206)

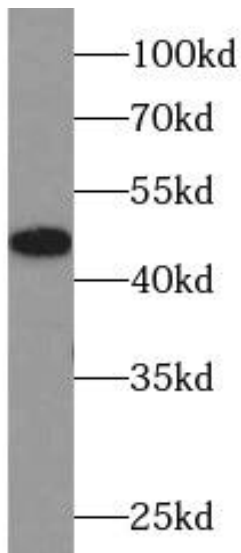
Tel : (0086)027-87384275

Fax: (0086)027-87800889 www.fn-test.com

Image:



Immunohistochemistry of paraffin-embedded human lung cancer tissue slide using FNab09873(SLC2A1, GLUT1 Antibody) at dilution of 1:200



Hela cells were subjected to SDS PAGE followed by western blot with FNab09873(SLC2A1, GLUT1 antibody) at dilution of 1:1000

Wuhan Fine Biotech Co., Ltd.

B9 Bld, High-Tech Medical Devices Park, No. 818 GaoxinAve. East Lake High-Tech Development Zone. Wuhan, Hubei, China(430206)

Tel : (0086)027-87384275

Fax: (0086)027-87800889 www.fn-test.com