

## DVL1 antibody

### Product Information

Catalog No.:	FNab09841
Size:	100µg
Form:	liquid
Purification:	Immunogen affinity purified
Purity:	≥95% as determined by SDS-PAGE
Host:	Rabbit
Clonality:	polyclonal
Clone ID:	None
IsoType:	IgG
Storage:	PBS with 0.02% sodium azide and 50% glycerol pH 7.3, -20°C for 12 months(Avoid repeated freeze / thaw cycles.)

### Background

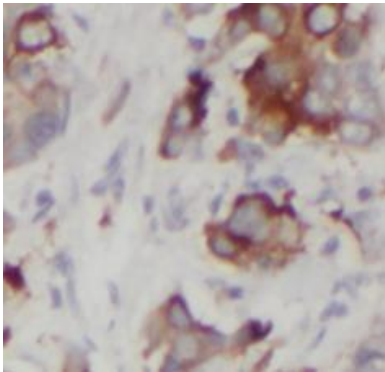
DVL1 is one of three DVL homologous proteins (DVL1–3) widely expressed in embryonic development and in the adult central nervous system. Dishevelled proteins are a necessary component of the Wnt and planar cell polarity developmental signaling pathways. Overexpression of DVL1 has been linked to prostate and breast cancers through the Wnt signaling pathway.

### Immunogen information

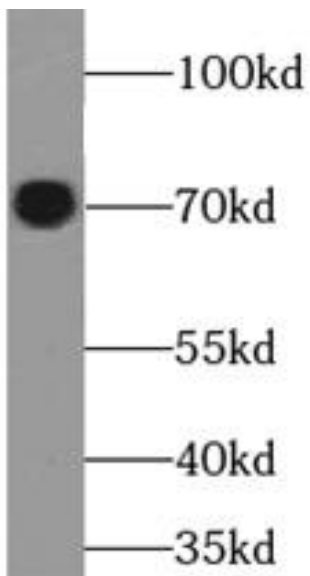
Immunogen:	dishevelled, dsh homolog 1
Synonyms:	Segment polarity protein dishevelled homolog DVL-1 (Dishevelled-1) DSH homolog 1 DVL1
Observed MW:	70 kDa
Uniprot ID :	O14640

### Application

Reactivity:	Human, Mouse
Tested Application:	ELISA, WB, IHC
Recommended dilution:	WB: 1:500-1:2000; IHC: 1:50-1:500
Image:	



Immunohistochemistry of paraffin-embedded human breast cancer tissue slide using FNab09841 (DVL1 antibody) at dilution of 1:200



NIH/3T3 cells were subjected to SDS PAGE followed by western blot with FNab09841 (DVL1 antibody) at dilution of 1:1000