

CCL20 antibody

Product Information

Catalog No.:	FNab09791
Size:	100µg
Form:	liquid
Purification:	Immunogen affinity purified
Purity:	≥95% as determined by SDS-PAGE
Host:	Rabbit
Clonality:	polyclonal
Clone ID:	None
IsoType:	IgG
Storage:	PBS with 0.02% sodium azide and 50% glycerol pH 7.3, -20°C for 12 months(Avoid repeated freeze / thaw cycles.)

Background

CCL20, also known as macrophage infiltrating factor protein 3α, is a C-C chemokine that specifically binds to the receptor CCR6. CCL20 is produced in various tissues and by a wide range of immune cells, including neutrophils, natural killer cells, T-helper type 17(Th17) cells, B cells, and various antigen-presenting cells, such as dendritic cells(DCs), Langerhans cells, and macrophages. Increased expression of CCL20 is likely involved in the increased recruitment of dendritic cells observed in fibroinflammatory diseases such as chronic obstructive pulmonary disease(COPD). CCL20 expression is increased by the proinflammatory cytokine IL-1 beta.

Immunogen information

Immunogen:	chemokine(C-C motif) ligand 20
Synonyms:	C-C motif chemokine 20 Beta-chemokine exodus-1 CC chemokine LARC Liver and activation-regulated chemokine Macrophage inflammatory protein 3 alpha (MIP-3-alpha) Small-inducible cytokine A20 CCL20(1-67) CCL20(1-64) CCL20(2-70) CCL20 LARC MIP3A SCYA20
Observed MW:	None
Uniprot ID :	P78556

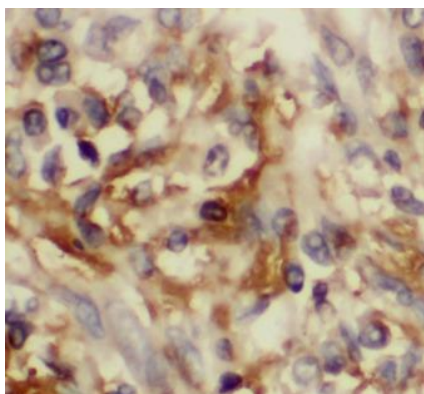
Application

Reactivity:	Human
-------------	-------

Tested Application: ELISA, IHC

Recommended dilution:IHC: 1:50-1:500

Image:



Immunohistochemistry of paraffin-embedded
human lung cancer tissue slide using
FNab09791(MIP-3 α Antibody) at dilution of 1:200