

ZWILCH antibody

Product Information

Catalog No.:	FNab09761
Size:	100µg
Form:	liquid
Purification:	Immunogen affinity purified
Purity:	≥95% as determined by SDS-PAGE
Host:	Rabbit
Clonality:	polyclonal
Clone ID:	None
IsoType:	IgG
Storage:	PBS with 0.02% sodium azide and 50% glycerol pH 7.3, -20°C for 12 months(Avoid repeated freeze / thaw cycles.)

Background

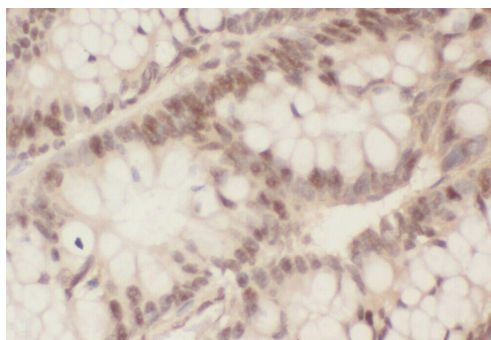
Essential component of the mitotic checkpoint, which prevents cells from prematurely exiting mitosis. Required for the assembly of the dynein-dynactin and MAD1-MAD2 complexes onto kinetochores. Its function related to the spindle assembly machinery is proposed to depend on its association in the mitotic RZZ complex(PubMed:15824131).

Immunogen information

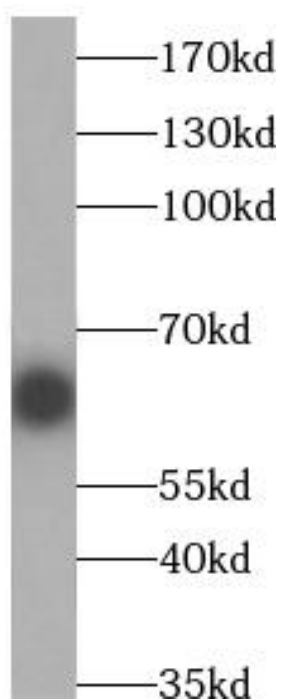
Immunogen:	Zwilch, kinetochore associated, homolog(Drosophila)
Synonyms:	Protein zwilch homolog (hZwilch) ZWILCH
Observed MW:	67 kDa
Uniprot ID :	Q9H900

Application

Reactivity:	Human, Mouse, Rat
Tested Application:	ELISA, WB, IHC
Recommended dilution:	WB: 1:200-1:2000; IHC: 1:20-1:200
Image:	



Immunohistochemistry of paraffin-embedded human colon cancer tissue slide using FNab09761(ZWILCH Antibody) at dilution of 1:50



PC-3 cells were subjected to SDS PAGE followed by western blot with FNab09761(ZWILCH Antibody) at dilution of 1:500