

YME1L1 antibody

Product Information

Catalog No.:	FNab09566
Size:	100µg
Form:	liquid
Purification:	Immunogen affinity purified
Purity:	≥95% as determined by SDS-PAGE
Host:	Rabbit
Clonality:	polyclonal
Clone ID:	None
IsoType:	IgG
Storage:	PBS with 0.02% sodium azide and 50% glycerol pH 7.3, -20°C for 12 months(Avoid repeated freeze / thaw cycles.)

Background

YME1L1(ATP-dependent zinc metalloprotease) is also named as FTSH1, YME1L,Meg-4,PAMP. YME1L1 plays a phylogenetically conserved role in mitochondrial protein metabolism.It also ensures cell proliferation, maintains normal cristae morphology and complex I respiration activity, promotes antiapoptotic activity and protects mitochondria from the accumulation of oxidatively damaged membrane proteins. YME1L1 can prevent mitochondrial DNA inserting into nuclear. It has 3 isoforms produced by alternative splicing with the molecular weight of 86 kDa, 80 kDa and 76 kDa.

Immunogen information

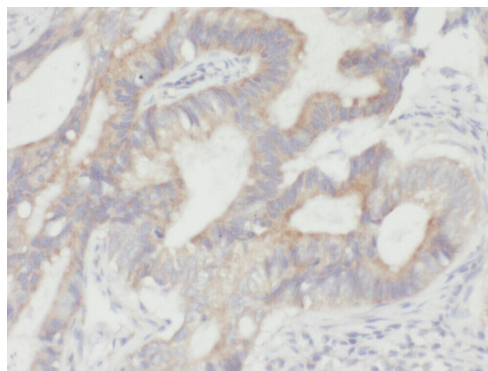
Immunogen:	YME1-like 1
Synonyms:	ATP-dependent zinc metalloprotease YME1L1 ATP-dependent metalloprotease FtsH1 Meg-4 Presenilin-associated metalloprotease (PAMP) YME1-like protein 1 YME1L1 FTSH1 YME1L
Observed MW:	86 kDa, 60 kDa
Uniprot ID :	Q96TA2

Application

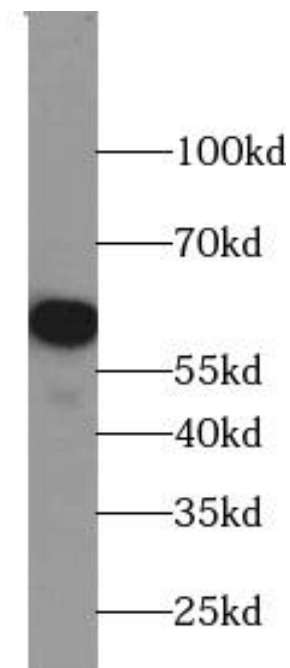
Reactivity:	Human, Mouse, Rat
Tested Application:	ELISA, WB, IHC, IF

Recommended dilution: WB: 1:200-1:2000; IF: 1:10-1:100; IHC: 1:50-1:200

Image:



Immunohistochemistry of paraffin-embedded human colon cancer using FNab09566(YME1L1 antibody) at dilution of 1:100



mouse heart tissue were subjected to SDS PAGE followed by western blot with FNab09566(YME1L1 antibody) at dilution of 1:300